



WEST KENT NEWS

AUTUMN 2022 EDITION



Her Majesty, Queen Elizabeth II

April 1926 - September 2022



Provincial Executive

Updates and news from our Provincial Grand Master and the Provincial Executive Team.

Pilgrims Walk

Our Group 2 APGM and his son take on the Pilgrims Walk to raise £10,000 for the MCF.

500 Club Winner

Duke of Kent Court announce their first 500 Club £1,000 Winner.



TABLE OF CONTENTS

3 WELCOME

A message from the Editor

4 PROVINCIAL EXECUTIVE

Updates and news from our Provincial Grand Master and the Provincial Executive Team

24 LODGE IN FOCUS

Lullingstone Lodge No1817, Implements the Members Pathway, and News about upcoming Workshops

26 PILGRIMS WALK

Our Group 2 APGM and his son take on the Pilgrims Walk to raise £10,000 for the MCF

30 500 CLUB WINNER

Duke of Kent Court announce their first 500 Club £1,000 Winner.

32 REMEMBRANCE SUNDAY

Information about how to take part in the Remembrance Sunday parades throughout the Province

34 WEST KENT LIGHT BLUES

An update from the newly elected West Kent Light Blues Committee about their work across the Province

A MESSAGE FROM THE EDITOR

Brethren All,

Welcome to our Autumn edition of West Kent News.

I hope you have all had a rested summer, and much of the weather with which we were blessed was enjoyed.

When putting our periodical together, I reflected on how determined everyone had been prior to the summer break to get our Masonic lives back to how things were by working tirelessly, to reinvigorate our activities once again, and restore our social events.

Please tell us about the things you have been doing to breathe life back into your Lodges, and what you have planned, so that we can share your plans and hopefully, garner further support from Brethren who might be keen to support your events, whether they are special ceremonies or social events and rebuild the wonderful camaraderie that existed prior to our almost, two year hiatus.

I hope you find this edition of our magazine both informative, and useful. Please contact your Communications Team on communications@westkentmasons.org.uk with any contributions you might have for our next publication, we will be only too pleased to hear from you.

Kindest and Fraternal regards,
Adrian Grant



<https://twitter.com/westkentmasons>



<https://www.facebook.com/westkentmasons.org.uk>



<https://www.instagram.com/wkfreemasons/>



A MESSAGE FROM THE PROVINCIAL
GRANDMASTER AND **GRAND**
SUPERINTENDENT:
MARK DOUGLAS ESTAUGH

Brethren and Companions,

It is once again time for our regular edition of West Kent News and since initially drafting my submission for this edition with a sense of optimism for the forthcoming Masonic season, I have sadly had to review my text, given how deeply saddened I was to hear of the passing of Her Majesty The Queen, aged 96 years young.

She served as our Monarch for over 70 years with the greatest distinction and am not certain that many members of our Province recollect toasting her predecessor in the throne, such has been the tenure of her appointment as our Queen. Her lifelong dedication and unfailing service to all in her realm was truly inspirational. There will be a period of Masonic mourning to coincide with the period of national mourning and black ties are to be worn during that period.

I am pleased that we have now been able to resume our Masonic activities in earnest and that many of you are returning to your Lodge or Chapter meetings.

Following the unexpected passing of WBro Daniel John Spencer, PSGD APGM, earlier this year, I was able to announce WBro David Alfred Huntley PAGDC as his successor and he has already immersed himself in the task. David is well known to you all and am certain that he will prove to be a very worthy successor to Daniel.

I was delighted to see your support for our combined Provincial Craft and Royal Arch meetings in May, and am given to understand that we have over 940 people In the Temple, which was a magnificent commitment of support on your part.

Following the new appointments which were made at that time in both teams, and the new strategy for the Royal Arch, each has been working tirelessly to review our membership to establish whether any member has been overlooked for Provincial preferment.

I'm indebted to our Secretaries and Scribes E for their feedback and am pleased to announce that the Craft investitures will take place on 4 October at Oakley House, when we join Knole Lodge 1414 as part of its 150-year anniversary celebrations.

At that time, we will also be investing David Huntley as APGM, and undertaking a number of other celebratory activities.

The Royal Arch investitures will take place at Oakley House on 11 November when we undertake a demonstration of the "Passing of the Veils" Ceremony which is to be held at that time. Do please come and support both of these events which will be extensively

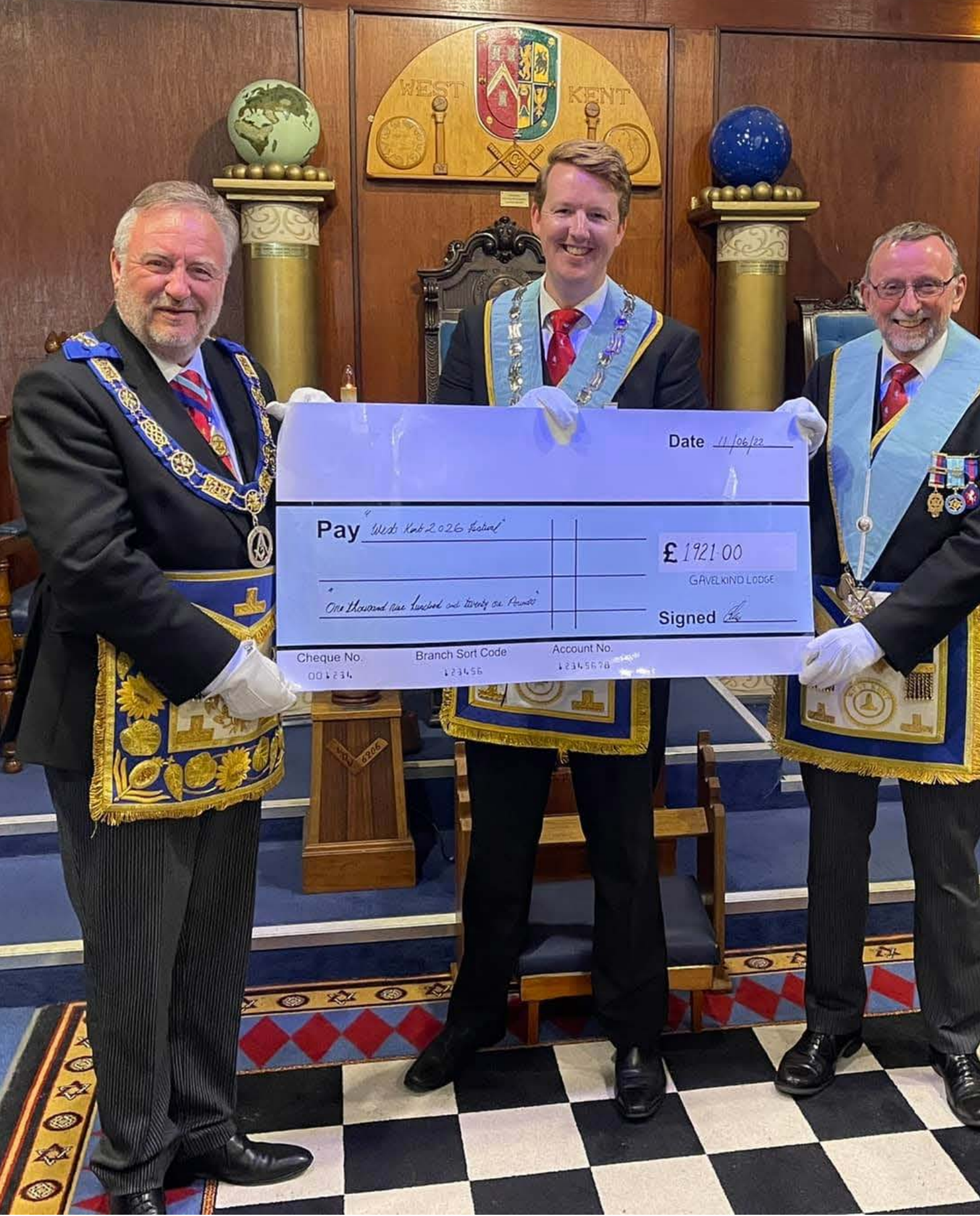
advertised through your Lodge and Chapters and on our Social Media channels.

As always, Membership Development remains our singular over-riding Provincial priority, and our close working relationship with our Lodges and Chapters is helping to achieve excellent results in this important area. I remain delighted to see that many summonses report new initiates and Exaltees, more joining and re-joining members, which evidences that our membership attraction measures are working. Coupled with the ever-decreasing number of resignations we are seeing year-on-year, I am very confident that we will see a return to positive membership growth for our Province in the immediate future.

As always, my very best wishes to each and every one of you - and your loved ones - for continued success during the rest of the Masonic season and I look forward to seeing as many of you as possible at the Investiture ceremonies at Oakley House on 4 October and 11 November.

Keep well, and keep enjoying your Masonry in West Kent.

Gavelkind Lodge No. 4266
Donating £1,921 to the 2026 Festival



Date 11/06/22

Pay West Kent 2026 Festival

£ 1921.00

GAVELKIND LODGE

One thousand nine hundred and twenty one Pounds

Signed [Signature]

Cheque No.
001234

Branch Sort Code
123456

Account No.
12345678



THE DEPUTY PROVINCIAL GRAND MASTER: IAN GALLEHAWK

I am happy to be writing an article for the West Kent News for the first time as your Deputy Provincial Grand Master. I have, so far, met with much encouragement and support and I thank everyone for the welcome you have collectively given to me.

As you might expect, gaining more members continues to be the key Provincial priority and we have good cause to feel encouraged. By the time this edition has been published, UGLE will have launched its second National Digital Marketing Campaign (NDMC). Put in perhaps easier terms, this is a social media campaign using Facebook and Instagram. Building on the experience gained from the first NDMC, the target group has been much refined and extended, specifically using Instagram as a tool to reach out to students and younger people.

As we now prepare for the anticipated increase in enquiries, I can only repeat that West Kent is a Members' Pathway Province. Attracting new members is only part of the challenge, engaging with and retaining them is essential to our ongoing growth. Our message is clear and consistent; the Members' Pathway provides a tried and proven framework for attracting, retaining and retrieving members. If your Lodge needs any advice or guidance around the Members' Pathway, please engage with the Provincial Membership Team.

Unfortunately, UGLE is unable to alter national events and circumstances. It is no secret to anyone that we are entering a period of economic uncertainty, which looks set to be possibly more challenging than has been seen for many years. While we cannot alter events, we can influence how we interact with each other. With COVID still in the background, economic uncertainty creates a further potential barrier to members returning to labour. During lockdown we saw tremendous efforts across our Province to stay in touch and reach out to any brother, who might be struggling. Let's make sure that we now look after our brethren and reach out to any who might be struggling because of current circumstances. The Provincial Almoner and his team are there to help with any enquiries but always remember that the first step to helping might be a phone call from you. Let us also review our Lodge processes and make sure that we only charge such fees as are necessary.

With a full quarter of the year left to go, we have already initiated more new members than we did last year. Our losses across the Province continue to show a record low. Our member numbers are reaching the flat line that looked so unattainable only a short while ago. I hope you have all enjoyed the summer break. We have much to look forward to over the winter and I look forward to meeting up with you all as we grow our Province towards the New Year.





ASSISTANT PROVINCIAL GRAND MASTER: ANDREW WADDINGTON

I would like to welcome you all back to Freemasonry as we start our new masonic season, although for some of you this may already be well underway. For me as Assistant Provincial Grand Master for Group 2, the summer break is always filled with Masonic duties. What many don't realise is that behind the scenes, our Province continues to run in as efficient way as possible, dealing with the myriad of administrative tasks needed for the benefit of us all. Paul Christopher, our Provincial Grand Secretary, Roy Huntley, Provincial Assistant Grand Secretary and all of the volunteers who make up the staff of our Provincial Office work tirelessly to make sure that West Kent functions properly.

The management teams at Welling Masonic Centre and Wrotham Masonic Hall have also been working over the summer period to ensure that the Centres will be ready for our return to labour.

As the Assistant provincial Grand Master who has the pleasure of overseeing these Centres, and the Lodges and Brethren who meet at them, I have been pleased to see that some Lodges are beginning to see the shoots of growth. By following and adopting The Members' Pathway they have been able to attract new members, retain existing members and in some cases bring past members back into Masonry.

Some, however, have taken, or are about to take that very difficult decision to close and return their warrants to The Most Worshipful, The Grand Master.

I urge all of you as individuals and as members of Lodges to take every step possible to ensure the growth and longevity of your Lodges. For those of you who are in a Lodge considering closure, I would very much ask you to consider joining another Lodge to continue your Masonic journey. You all still have much to offer this fantastic organisation and it has much to offer you. For those of you who are yet to find a Lodge to call home, and are eligible please consider a Past Masters Lodge. You can always contact me or the Membership team to find out more.

This year, I became President of The West Kent Light Blues Club following the sad loss of my Predecessor and fellow APM, WBro. Daniel Spencer. The new committee under the Chairmanship of Liam Finney have many ideas to take the Club forward, but it can only be a success with your input and support. If you have yet to receive Provincial Grand Rank, are a member, from the Entered Apprentice to a Past Master you are equally as important. Please visit the Light Blues Club page on the Provincial website or look for their Facebook or Twitter feeds.

This year the Provincial Grand Master has been pleased to appoint the following Brethren as Visiting Officers within Group 2:

- James McCafferty, who will look after Wheatsheaf Lodge, Desaguliers Lodge and Park Langley Lodge.

- Paul Waterman who will look after Saye and Sele Lodge, Prudence and Concord Lodge and Lowood Lodge.

- Bernard Tilley who will look after Westwood Lodge, Pattison Lodge and Camellia Thea Lodge.

They have replaced David James, Chris Clark and Ian Gallehawk who have stood down after years of faithful service.

For my own part, I completed the Pilgrims Way walk from Winchester to Canterbury in July with my son James, a fellow West Kent Freemason, and with the amazing generosity of some individuals, Lodges and Chapters raised over £10,000 for the 2026 Festival. We completed 143 miles in 6 days and it was your support which kept us going. A massive thank you to you all.

Finally, a very warm welcome to Park Langley Lodge, Lodge of Highcroft Crockenhill and to Lodge of Good Intent who joined Group 2 this year. I look forward to meeting as many of you as possible over the coming season.

Stay safe and well, follow the Members Pathway and God bless you all.



On the Pilgrims Walk



ASSISTANT PROVINCIAL GRAND
MASTER: PETER BROOKER

‘Freemasonry, the great beacon of light that brings hope and stability to our busy world’.

Here we are again with a full masonic season ahead of us and I must say I am really looking forward to the fun and enjoyment we all share with our friends within Freemasonry.

The world has recently gone through some awful years and this year has been no exception, including an enormous refugee crisis in Europe and energy costs continue to grab the headlines. Although these things are beyond our control, we will always endeavour to play our part in helping others within our communities and those suffering overseas.

Freemasonry is that great beacon of light that brings hope and stability to our busy world.

We should continue spreading the word to others so they too can share all the positivity that comes from membership of our wonderful organisation. Growing our resources will enable us to continue the work we do and we take great pride knowing we have made a difference.

As a result of the brilliant work undertaken by our members, there are large numbers of Grand Lodge Certificates waiting to be presented this year. Many Lodges have candidates ready to be Initiated and it looks like being another exceptional year for West Kent - I can't wait to be a part of it!





ASSISTANT PROVINCIAL GRAND
MASTER: GRAHAM RAVEN

As my first year as the Group One APM draws to an end, it has been good to reflect on the progress the Lodges in the Group have made since the ending of the two-year shutdown. The worries of a significant reduction of membership did not happen and this was due to Lodges' engagement with their members and the support of the lodge Visiting Officers (VO) and the Membership team.

As we move into our current year, we will have some challenges, due to the economic pressures on the way, but I am sure that with the Lodges support assisted by the group VO's, Lodge Almoners and Membership teams, we can weather the storm and keep enjoying our Masonry.

Reflecting on my first year, some great times have been experienced, with being privileged to present some eight, fifty and sixty year service citations, attending some eleven initiations, and many other enjoyable lodge visits. Attending the Provincial Investiture meeting to see those Brethren rewarded for their work for their lodges and our Province filled me with much pleasure.

Back in May was a busy time, hosting our visitors from Virginia, USA. Our guests attended some eleven lodge meetings and presented the exemplification of their work at five lodges. The support from those lodges was exceptional and I thank them for their support, much work was displayed.

Their visit went down well with full temples wherever they visited. They attended our Investiture meeting held at Freemasons' Hall, as VIP guests of our Province, and were overwhelmed by the welcome they received by the Brethren and left laden with gifts!!! In fact, they are still talking about their time with us and planning to return in 2026.

As a new season starts I look forward to meeting even more of you and enjoying your company. Let us keep enjoying our Masonry.





THE DEPUTY GRAND
SUPERINTENDENT: JAMES MARSH

Companions,

I write this having recently heard, as we all have, of the death of our Queen, Her Majesty Queen Elizabeth II. Although she lived a long and a very full life of devoted service to this country, it was still a great shock to hear of her passing – The Queen was an inspiration to us all, and I am sure that she will be remembered with warmth and utmost respect. I echo those touching words written by our Most Excellent Grand Superintendent that our thoughts and prayers should be with the Royal Family at this most difficult of times.

Turning to the Royal Arch in West Kent, the Principals and Assistants to the Principals have remained very busy during the summer. Preparations have been put in place for a special Meeting of the Provincial Grand Stewards' Chapter where the stewards will give a demonstration of the Ceremony of the Passing of the Veils – something not seen in this Province for some eight years or so; there is also to be an exaltation where an exalte will be exalted using 'Added Theatre'.

These are two very special, and I hope interesting Meetings that I encourage all West Kent Companions

to attend. In fact, our neighbours, East Kent have heard that we are carrying out the Added Theatre exaltation and have asked our team to do the same with an exalte in East Kent – this is due to take place in January.

Further, our new Royal Arch Membership Team as announced by our Most Excellent Grand Superintendent (MEGS) at our last Provincial Meeting is now embedded within the Province and is working on several lines of important work. They have already put into place a process to assist all new Master Masons to join the Royal Arch as soon as they are ready. They are also contacting those who may have left the Royal Arch with a view to reinvigorating their interest.

In carrying out their work, the RA Membership Team will be working closely with all Lodge Royal Arch Liaison Officers (RALOs) - previously known as Lodge Royal Arch Reps, and Chapter Membership Officers (CMOs) - the new uncollared role within Chapters.

It is important that these new roles are held by the right person for each

Lodge and Chapter; the RALO will be the person assisting a Brother to find an appropriate Chapter, and the CMO will be the focus of a Chapter as far as their membership attraction is concerned.

MEGS has underlined the importance of these two pivotal roles.

I am pleased to say that the future of Royal Arch masonry in West Kent looks bright; we are attracting good numbers to the Order and we are managing to stem our losses.

However, I am fully aware that we are not to rest on our laurels, and I and the rest of the Royal Arch team are redoubling our efforts to ensure that the Royal Arch in West Kent will soon attain MEGS' target of 50% of his Craft members being in the Royal Arch, and of lifting that percentage year on year. His vision is that the Royal Arch in West Kent will be the benchmark for other Provinces to follow.





PROVINCIAL GRAND SECRETARY:
PAUL CHRISTOPHER

From the Provincial Grand Secretary's Desk

On behalf of the Provincial Office, I would like to offer sincere thanks to all those Secretaries and Scribes E who work so diligently to ensure the Lodge and Chapter paperwork is dealt with in timely fashion.

After a considerable amount of preparation in updating Adelphi, we have just been informed that West Kent is due to go live with Project "Hermes" from the beginning of December. Hermes training will start from October for the Provincial administrators and is planned to be rolled out to Secretaries and Scribes E from November. Any (I.T. savvy) members that would like to assist with the rollout should contact the Office.

As we start the new Masonic season I would like to advise of some updates:

Resignations:

A new email address has been setup for all notifications of Craft and Royal Arch resignations -
Resignations@westkentmasons.org.uk

It is Provincial policy that the Office be advised of all resignations immediately they are known so that respective teams can make contact and ensure support is given, and any welfare concerns are addressed

Please do not wait to advise of resignations via the UGLE annual return.

Summonses:

Lodge or Chapter summons should be e-mailed to
CraftSummons@westkentmasons.org.uk
or
RASummons@westkentmasons.org.uk
and should arrive a minimum of 21 days prior to your meeting / convocation. This will allow time for any official visitor(s) to be made aware of your programme of work and for any relevant Provincial communication to be sent to the Lodge / Chapter in good order.

It is most important that our Province is made aware of all Initiations, Passings, Raisings, and Exaltations in advance. Literature is being prepared for Candidates in each of the respective degrees and will be posted to Secretaries, and Scribes E, in advance of meetings.

The Provincial Office will also need to be advised if a planned Raising does NOT take place. Invitation letters from the Grand Superintendent are to be posted directly to Brethren 28 days after their Raising, inviting them to join the Royal Arch.

Secretaries and Scribes E:

The Provincial Office is keen to welcome all new Secretaries and Scribes E to the Office at Bromley.

We can go through the duties of your Office and explain the various forms and paperwork. Please call on 020 8462 9249 beforehand to arrange a visit between Monday to Thursday, 9 a.m. to 1 p.m.

There is scarcely a case of difficulty can occur in a Lodge (Chapter), in which this Office will not set you right. For all friendly advice please call or email

Office@westkentmasons.org.uk

I offer you my very best wishes in all your Masonic endeavours.



Secretary collar jewel, 1800s ©Museum of Freemasonry, London



PROVINCIAL GRAND DIRECTOR OF CEREMONIES: DANIEL UNTHANK

"Because thats how it's always been done...."

In Freemasonry the phrase above is among those dreaded utterances such as "we're not a secret society, we're a society with secrets" and "your subs are due". Every time I hear it, my heart sinks a little.

There is a fundamental difference between doing something because it is a tradition and doing something "because that's how it's always been done". Traditions are a major part of any culture, Freemasonry included. They bring a sense of security; our rituals and ceremonies unify us and bring back memories of the past. However, it is important to remember that, whilst our traditional rituals and ceremonies remain the same, those performing the rituals change and we need to ensure that certain 'traditions' don't work against current and future generations of our members. Traditions can never be a hindrance to progress because true tradition is open enough to welcome changes.

Traditions broaden our horizons and make us better rounded. They lend us a broader outlook of our Masonic experience. They are our guides and mentors, laying down the fabric and foundation of our Lodges.

Nevertheless, all traditions require periodic renovation, a search for balance and the graceful acceptance of change. If we remain rooted in outdated traditions, we are bound to suffer.

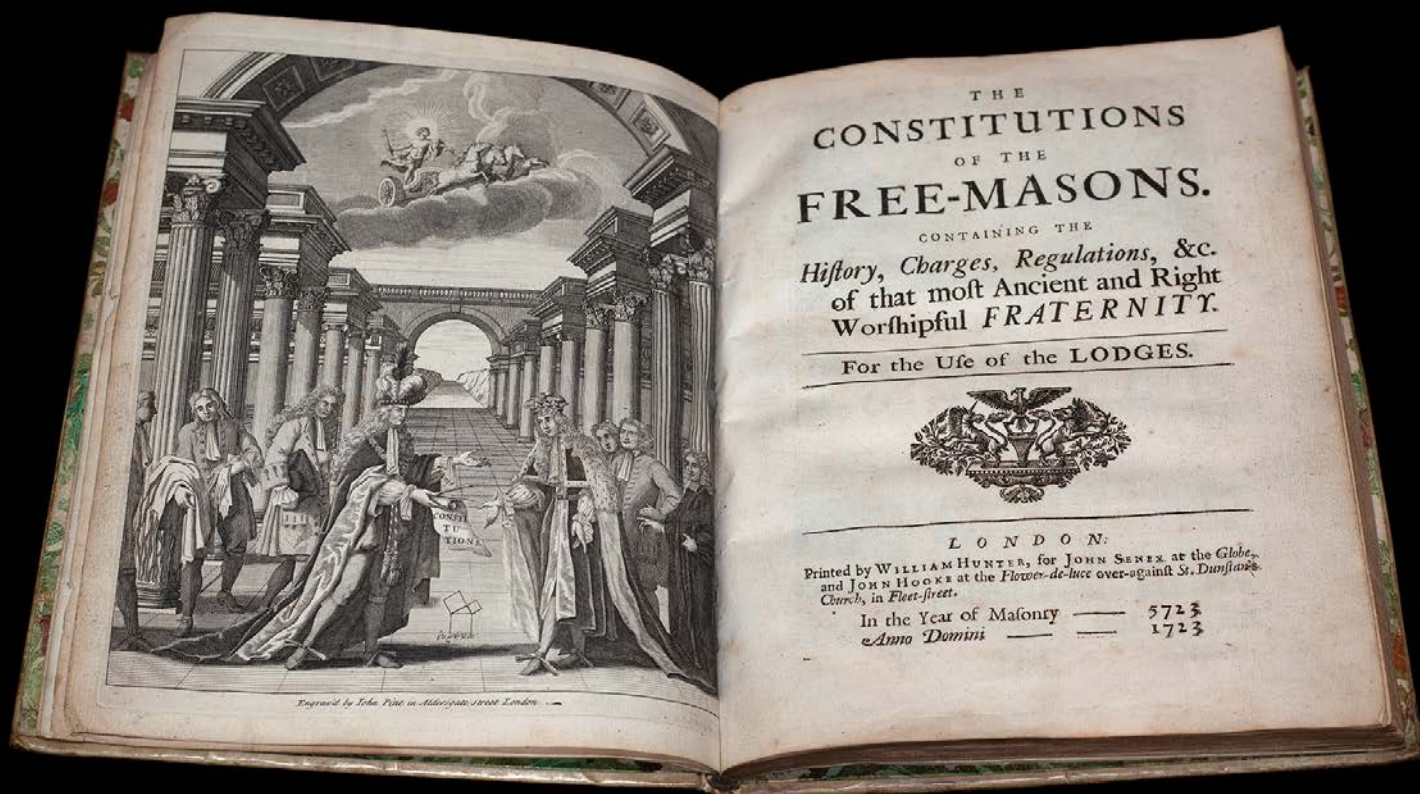
This is amply highlighted by the decline we have seen in membership over the last couple of decades. Our cardinal beliefs, principals and ethos haven't changed, but neither have some less attractive customary behaviours which aren't in line with what the modern man is looking for.

The appeal of Freemasonry remains; the ability to establish friendships that you might not have otherwise, being part of a supportive community and charitable organisation. Society has, however, seen a radical shift in social interaction. As little as twenty or thirty years ago, lives were considerably less busy, and entertainment was harder to come by. In today's world, people tend to be far more busy and far more occupied with artificial social interaction that can be obtained from the comfort of their living room (social media, television, etc.). Maintaining an active presence in an organisation outside

of the family unit is seen as less of a fun social experience, but rather an unnecessary chore that robs precious time at home for a family man. It is these challenges that Lodges need to overcome if they are to see their membership remain or increase.

We should remember that a Lodge isn't defined by the day or time it meets, how many courses it has at the Festive Board or who the Worshipful Master takes wine with. A Lodge is defined by its members, the support they provide each other and the enjoyment they get from being together.

We have the onus to absorb the best from our traditions and mould them to our current requirements. Traditions run parallel to progress and they in no way inhibit each other's growth. They are symbiotic to each other, should be embraced, welcomed, and positively carried forward. It should be our endeavour to promote our good traditions and weed-out the bad, in keeping with the times. Let's not lose members or discourage new membership just to satisfy "how it's always been done".



Anderson's Constitutions of the Free-masons, 1723



PROVINCIAL GRAND ALMONER: GRAHAM TARRAN

Since the last news article, our Almoner team have been working tirelessly in supporting lodge Almoners with member engagement, retention, and retrieval.

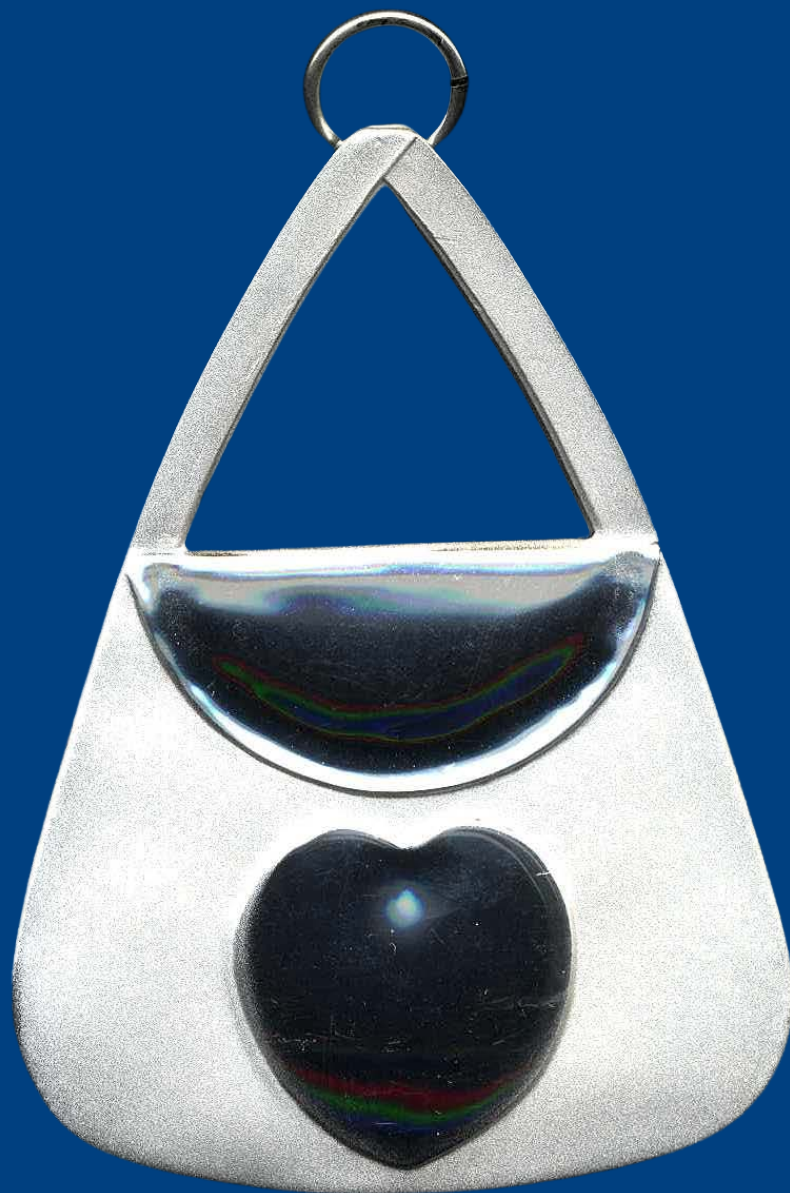
With the lifting of COVID-19 related restrictions, we have all enjoyed the return of masonic activity, and a semblance of normality. The generosity and support shown by freemasons to each other and to the wider community during the pandemic has been remarkable. It is now up to each and every one of us now that restrictions are lifted to continue showing that care and compassion. With the current energy crisis and rising prices adding to the fallout from the pandemic, it is vital that we remain in constant contact with all lodge members to ensure that support required can be quickly identified. If you are aware of anyone in need of help or support, please contact your lodge Almoner, or one of our Provincial Almoner team.

The MCF have been as busy as ever in providing invaluable support. During the last year (August – August) West Kent members and their families have received £138,571 from MCF grants. At Provincial level, we recognise the plight of many Brethren who, due to a variety of reasons, face serious financial difficulties. The Provincial Almoner Fund is available for modest financial support to address immediate financial need, normally while awaiting longer term help to be finalised. The application form for a grant from this fund can be found on our [Provincial website here](#).

Please be aware that blank medical cards have been distributed to all lodge Almoners. They are free for you to use if you wish. It is up to the individual to record as much or as little information on the card as they wish, and this information is not shared with your lodge or with our Province. This is a personal and private opportunity for your wellbeing. If you wish to have a card, please contact your lodge Almoner.

I still have a vacancy for a Group Almoner, so I welcome any expressions of interest. Candidates will need to be committed to supporting the Members' Pathway and be able to work as part of the team. They should have excellent communication skills and an ability to work alone and ensure accurate records are maintained and stored correctly. This is an exciting opportunity to be part of a dynamic team that is working at the core of Provincial strategy. Full training will be provided. If you wish to be considered for this role, then please register your interest with me by emailing ProvGALM@westkentmasons.org.uk

Please remember that the Provincial Almoner team is here to support you, and to offer help, guidance and advice should you require it. All our contact details are on our Provincial website.



Almoner - Members Jewel



PROVINCIAL MEMBERSHIP OFFICER:
MARTIN WHITE-PEART

Brethren,

As we embark on this new masonic season, I am filled with hopeful optimism for the year ahead. As a [Members' Pathway](#) Province, the Provincial executive, led by the Provincial Grand Master, have placed membership at the heart of all that we do, making it the central focus of Provincial planning and strategy.

The overarching aim of attracting members and growing lodges underpins all aspects of our work.

Over the coming weeks as we return to Lodge meetings, you will become acquainted with your Lodge's Visiting Officer. The role of the visiting officer reimagines that of the former 'ProvGM Rep' providing a consistent point of contact between your Lodge and the Province. They serve as a source of support, guidance and information.

It is hoped that this new styled working relationship along with our Provincial Membership services will help you and your Lodges to fully engage with the [Members' Pathway](#), review current practices, and make the necessary innovations as and where required in order to safeguard the future of the Lodge.

On the 1st of September, UGLE launched a new national digital media campaign to raise awareness of freemasonry and encourage expressions of interest in joining from the wider public.

Since the onset the campaign there has certainly been a distinct uptick of external enquiries into West Kent.

The Provincial Membership team diligently work through all external enquires and once screened will seek to place suitable applicants within local Lodges, matched based on the compatible profiles of the applicant and potential lodges.

As you can appreciate, careful consideration is given to any potential placement. As a Province, we have a duty of care towards these men to ensure the best possible experience, as they entrust us to guide them on their journey into freemasonry.

It is our responsibility to provide these unsponsored men with the best possible opportunity to engage in all that Freemasonry has to offer and secure them as potential lifelong members.

This is only possible if we are clear in what it is we are offering, and are confident that a Lodge can meet both the expectations of the applicant and of the Province.

As such, as a starting point, in order for any Lodge to be considered for the placement of an external applicant it must have adopted the Members' Pathway; appointed a Lodge Membership Officer; developed a Lodge plan and profile and be fully engaged with the Provincial Membership team.

If your Lodge is not yet in this position, it is not too late. Speak with your Visiting Officer who can guide you where start and link you in with the representative from the Provincial Membership team. If you do not know who your Visiting Officer is, then please Contact your Group AProvGM or myself.

MEMBERS PATHWAY





The Provincial Membership Services Team have worked with many Lodges to support them to implement the Members' Pathway in the most successful way.

We have had considerable success across the Province, and would like to highlight the individual success of Lullingstone Lodge No. 1817.

Members of the Lullingstone Lodge have embraced the Members' Pathway, engaging with the Provincial Membership Team, to create a plan, and develop their Lodge profile and materials which allowed them to raise public awareness of their Lodge.

Their hard work and dedication, with the support of the Provincial Team, has resulted in them attracting 3 external candidates to their Lodge. The Lodge's journey is detailed on the below 5 point chart, showing how they planned, attracted, engaged and retrieved members, to give them maximum impact.

In order to support members and Lodges to engage in and develop best practice, The Provincial Membership Services Team will run a programme of workshops which will be rolled out across the Province throughout the ensuing year.

The workshops will cover key themes to aid in building a successful Lodge. the first will focus on Lodge Planning and Attracting New Members: an overview of the Members' Pathway, Key roles and responsibilities, Lodge planning and development of your profile and local offer, candidate management and the placement of external applicants.

A LODGE IN FOCUS

IMPLEMENTING THE MEMBERS PATHWAY WORKSHOPS

The Second theme will focus on member Engagement: The Lodge experience and retention of Members, the journey through freemasonry, the personal and social offer from a Lodge.

The final theme, Retrieval: managing absenteeism, re-engaging past members and supporting members experiencing difficulties.

These workshops will be open to all members of the Craft and we strongly encourage lodges to attend on mass, after all you ALL have a vested interest! I further strongly encourage members to take the time to access the resources held on [b.ugle](#) website to assist learning and development around membership.

Likewise, from here you can also access the [Members' Pathway](#) quick start guide. Even if you feel that your lodge is in good shape, these workshops will provide the opportunity to review and consolidate practice, share what's working well and enhance your lodge experience by learning from others success.

Please take this as an opportunity to put your Lodge on the strongest footing towards being one that excites, enthuses and meets the expectations of its members, is attractive to prospective member and above all is FUN and enjoyable to participate in.

We look forward to welcoming each and every one of you over the course of the year at these workshops. In the meantime should you wish to discuss any matters relating to membership please contact on PMO@westkentmasons.org.uk I or an appropriate member of the team will respond accordingly.

A LODGE IN FOCUS

1

PLANNING

Engaged with the Provincial Membership Team and adopted the members Pathway. Worked to produce a Lodge plan, profile and materials to raise public awareness of the lodge

2

ATTRACT

The Lodge appointed an LMO who has actively coordinated and driven forward the agreed lodge plans around opportunities to grow membership

3

ENGAGE

Reviewed Lodge practices and made changes that best suited its members and those they wish to attract. Enhanced programme of social activities including dinners out, open evenings and Lodge BBQ.

4

RETRIEVE

Long-standing members have been reinvigorated by the new offer of social opportunities and lodge management. They have attended Lodge Meetings more frequently and are excited by the possibilities ahead.

5

IMPACT

Lodge has attracted 3 external candidates via their profile and through an improved offer of outward facing social events have attracted several potential candidates this year alone

**LULLINGTON
LODGE
NO.1837**

Willmington
Members: 44



Freemasons raise £10,000 the Pilgrims Way

In a heroic effort of individual determination and sacrifice, two West Kent Freemasons walked 143 miles across the South of England, from Winchester to Canterbury, to raise £10,000 for the MCF.

Worshipful Brothers Andrew Waddington, APGM, and his son James Waddington, Past Provincial Senior Grand Deacon walked an average of 25 miles a day for 6 consecutive days across varying terrain, all to raise money for the Masonic Charitable Foundation (MCF).

Whilst Andrew and James both strongly believe in the valuable work of the MCF, they were aware that through the pandemic and various restrictions, fellow Freemasons across the Province of West Kent, may not have had opportunities to fund raise or carry out activities to support this great cause. They knew that if they challenged themselves to achieve something tangible, they could galvanise lodges, chapters, and Freemasons across the Province to get behind their individual effort.

The Pilgrim's Way walk is a prehistoric pathway which provided a link between significant British religious sites. Walking the Pilgrims Way in modern times means traversing history on the Roman road, passing medieval Chapels and Abbeys, through to walking the ancient main streets of various important towns in the South of England.

It is a walk not for the faint hearted, but for the resolute and those with the conviction needed to complete the journey.

Day 1 - 23 Miles - 1600ft elevation

Starting in Winchester and covered, New Alresford, Ropley, Four Marks, Alton.

Spirits were high and we dodged the heat by staying on the forest edge where possible and making sure that we stayed hydrated filling up our water at any and all opportunities.

Day 2 - 25 Miles - 2000ft elevation

Covering Upper Froyle, Bentley, Farnham, Puttenham, Guildford, St Marta's Hill.

Some blisters started to appear, not helped by the sweltering heat. We were managing to keep our calories up with the meals we had prepared and supplemented with supplies picked up from local shops and pubs.

Day 3 - 24 Miles - 3100ft elevation

Taking in, Gomshall, Dorking, Reigate, Merstham.

The hardest day - Sore feet, blisters and knee problems. This was a very long and very slow day. By 8pm we still had over 9 miles to go. We finally arrived at our final destination at 1am.

Day 4 - 23 Miles - 2300ft elevation

Walking through, Oxted, Westerham, Otford, Kemsing, Wrotham and finishing on the edge of Trosley Country Park.

A softer day on the feet with less tarmac and more kind paths. We also had our first human interaction when family came to visit us at a stop off, bringing sweets with them. They soon realised their mistake, as for us this was day three without a decent shower!

Day 5 - 25 Miles - 1800ft elevation

Halling, Peter's Village, Aylesford, Detling, Harrietsham, Lenham and Charing.

We were starting to feel we were well on our way to finishing with less aches and pains although we were very careful about foot placement.

Day 6 - 18 Miles - 1500ft elevation

Boughton Lees, Chilham, Old Wives Lees, Chartam Hatch and Canterbury.

The final day started early so we could make a much needed stop at my Nan's house. The 6 days of hard walking and only managing 5 hours sleep per night really took its toll emotionally and physically. After leaving Nan's house we pushed the final 6 miles to Canterbury Cathedral where we were met by a wonderful crowd of people consisting of Spouses, Children, family, friends and the much missed dogs.

Pushing our adventurers to persevere was the thought of all those West Kent Freemasons, either individually or through their Lodges and chapters who had contributed to their effort, as well as thinking about the impact which their fundraised income could deliver through the MCF.

After walking 341,835 steps, developing injuries and picking up blisters, knocks, bumps, bruises and being generally completely exhausted, they said the following on why they chose the MCF:

"With so much need in the world at the moment having a dedicated professional charity dealing with life issues, cutting edge technology in medicine, life saving equipment and genuine human kindness - The MCF was the only choice for a one stop charity to help as many people as possible." - James

"When you know all of the good that they do especially in individual Provinces as well as Nationally, Internationally and for individual Masons and their dependents when time are tough, how could this not be the charity of choice?" - Andrew

Now with the fundraising bug, our travellers have begun planning an equally challenging 140 mile walk in 2023. The Wessex Ridgeway from Marlborough, Wiltshire to Lyme Regis, Dorset. Andrew and James also intend to raise money for the MCF during this walk.









News from the Association of
Friends of Prince George,
Duke of Kent Court
Chislehurst

**CONGRATULATIONS TO 'SEVEN STARS LODGE' OUR FIRST 500 CLUB
£1000 WINNER**

Due to the generosity of those Lodges and Chapters who have already joined our 500 Club, we have been able to guarantee funding for the much loved music therapist for the next 12 months, purchase garden furniture for the new garden bistro area and fund entertainers for various events at the Home.

**So how can YOU help bring a smile to the face
of a lonely older person this Christmas?**

It's easy - at the next meeting of your Lodge or Chapter ask if they have joined our 500 Club and if not encourage them to do so.

We know that demands on your charity income come from all sides but, to enable us to continue our work for the residents of your local RMBI Home, the cost to a Lodge or Chapter would only be £50 per year which might be only be around £1 per member.

Of course individuals and families are more than welcome to also join independently.

Your action NOW will help us buy a Christmas gift for every resident and enable us to plan ahead so that we can continue to improve the quality of life of the residents.

The future of our success at the Home is in your hands and it's not much to ask to bring a smile to someone less fortunate than ourselves.

**Remember it may be you or a loved one who will
one day benefit**

It is not too late for your Lodge or Chapter to join in our Christmas draw where there is another £1000 prize to be won - for more information and application forms please visit:

www.friendschislehurst.org/500club



Music therapist Ellie with residents Len Willis and John Skinner



ATTENDANCE AT OFFICIAL EVENTS FOR PROVINCE

REMEMBRANCE SUNDAY

Sunday 13 November 2022

11:00 am

As with other years we will be attending various Remembrance Sunday parades throughout the Province (due to demand and number we will not be able to "officially" attend all of them but will be supporting our local Majors).

We will be attending the following official Remembrance Sunday Parades and services:

- Sevenoaks
- Sidcup (last year it was in Bexleyheath)
- Bromley
- Dartford
- Tunbridge Wells

One or two may be added and will be updated once we get closer to the date if we have the numbers to do so.

At this event we have been approved by the Provincial Grand Master to wear Dress Craft or Royal Arch Regalia only, morning suits (if you have one or whatever you wear to Lodge meeting) and no gloves. It would be encouraged if you wore a Provincial festival tie also.

We will not have an DC carrying wands on these parades, as we do not want to distract from the event itself - the PGM will be accompanied by the Provincial flag only - any alterations to this will be communicated by Gordon Rollo (External Events Manager) prior to the event.

All those who are able to attend and complete this application will be contacted closer to the events with full details of where to meet and timings, also who will be official leading the Parade, as well as those who have been asked to assist with the logistics of pulling everyone together on the day and being a point of contact.

Any questions please direct them to Gordon Rollo who will be able to assist:

events@westkentmasons.org.uk

To register for the event you can visit our [EventBrite Page here.](#)





THE WEST KENT LIGHT BLUES CLUB

The West Kent Light Blues Club (WKLBC), held its Annual General Meeting on Saturday 30th July 2022.

Under the new Chairmanship of Liam Finney and a refreshed team, we look to build on the good work previously carried out. The WKLBC also welcomed its new President, Andrew Waddington APGM, and honoured the memory of its late President, Daniel Spencer APGM.

Our Club is looking forward to an exciting year, supporting our members and supporting the Provincial strategy. We have quickly strengthened links with other Provincial support teams, to ensure our members fully benefit from a good quality "West Kent Experience".

When one looks at what we all have in common, it is our love of Freemasonry. To this end, The WKLBC will deliver a series of events during the Masonic season, which will be fun, and enhance our Masonic learning. Details of a programme events will be available shortly. However, such events will not be limited to our Club members alone, but for all Freemasons.

Similarly, details of our social events will soon be available. Our social events, will not only be available to members of our Club, but all Freemasons. All social activities are open to families and friends, and we actively encourage that you bring along any prospective members your lodge might have, so they might benefit from meeting our membership, receive a wider welcome, and hopefully, gain an even greater insight into who we are and why we have such passion for things we enjoy.

The WKLBC is keen for members to be involved in our set up, and would like volunteers to act as Centre Representatives, in an effort to improve communications between our committee and our membership. We also encourage you to get involved in your Club and help shape it in a manner reflecting its members. It is your Club, and it is useful for us to hear from you to provide for your needs. Please contact Liam, our Chairman on: chairman@wklighblues.org.uk

There are exciting meetings in our Province around the corner, which will be of huge interest to many, and WKLBC urges all members to consider attendance:

On 4th October, The Knole Lodge No. 1414 will have its 150th Anniversary meeting. This a rare event and will be held at Oakley House. Apart from a celebration of the Lodge's history and wishing the Lodge continued success for the future, our Provincial Grand Master will also take the opportunity to invest David Huntley as our new Assistant Provincial Grand Master, and to invest many members of our Province who will be receiving celebratory appointments and promotions. At this stage, contact bookings@westkentmasons.org.uk to ascertain available space.

On 22nd October, The West Kent Provincial Grand Stewards Lodge No. 8565, will be hosting the annual Cornwallis Lecture, delivered by Bryan Gorin, entitled "The Linguistic Adventures of English On Its Masonic Journey". This meeting will be preceded by a breakfast, with the meeting beginning at 11am. Contact the Lodge's Assistant Secretary on asec@wkpqsl.org.uk to book your place.



**West Kent Light Blues Club attend
Quarterly Communications Meeting**

GOD SAVE THE KING



WEST KENT NEWS

AUTUMN 2022 EDITION

