



# WEST KENT NEWS



## July 2020 Edition

### A MESSAGE FROM THE EDITOR



Brethren and Companions,

I hope that this edition of our West Kent News magazine reaches you well!

Apart from the 'Special COVID-19 Edition' at the end of May, this is the Province's first 'Full Edition' magazine for quite a while. For that reason, it is a more substantial publication than you will usually expect, incorporating introductions from some of our new Active Officers and much of the most recent work of our West Kent Emergency Fund (WKEF) and many other contributors.

I very much hope, that you find it a light-hearted digest, balanced with useful and important information for you, and your Lodges and Chapters.

This is your magazine. As such, I urge you to submit articles and information to be included in future publications, times 3/4 times annually.

### A FOREWORD BY THE PROVINCIAL GRAND MASTER AND GRAND SUPERINTENDENT:

**MARK ESTAUGH**

Brethren and Companions,

I'm delighted to welcome you to the first edition of our West Kent News, which has been relaunched in its new livery.

The recent publication of a special edition of West Kent News to focus solely on your activities since the pandemic, was warmly received by all, and served to highlight not only the outstanding work of the West



Kent Emergency Fund, but also the innovative and very caring gestures which our members have been undertaking, for the welfare of those less fortunate in our community.

Despite the suspension of our Masonic activity since March, I and the Executive have been busier than ever, dealing with the myriad of enquiries and actions required of us during

Ultimately, it should reflect activities from all corners of our Province, whether it is about a special meeting held by your Lodge or Chapter; a fundraising event; a social occasion; or anything else you consider to be noteworthy, big or small.

Newsletters and magazines assist in binding communities together, and it is my desire that West Kent News will play its part in doing so, particularly, at this testing time for many of us, and in the future.

Send your submissions to me via Communications Team, accompanied with high resolution photographs to [communications@westkentmasons.org.uk](mailto:communications@westkentmasons.org.uk).

Keep up to date with Provincial matters, by looking at our website: <https://westkentmasons.org.uk>, and follow our Social Media Channels on:

Twitter: <https://twitter.com/westkentmasons>

Instagram: <https://www.instagram.com/wkfreemasons/>

Facebook (Open): <https://www.facebook.com/westkentmasons.org.uk>

Join our closed Facebook group to share stories and discuss things with fellow West Kent Freemasons: <https://www.facebook.com/groups/911672748925759/>

I look forward to hearing from you in the coming weeks and months, and including your submissions, to your West Kent News. **ADRIAN GRANT**

that time. We have held weekly COBRA Zoom meetings with our Deputies and Provincial Secretary, monthly Craft and Royal Arch Chains meetings and our Deputies have held their own weekly meetings with their teams, to ensure that there is clear communication to all parts of our extended team - a critical requirement during the time we have been unable to meet in a more classical way.

Although we have undertaken even more proactive work in keeping our website up to date with information, and communicating proactively on each of our Social Media channels, I hope that the Provincial Grand Master / Grand Superintendent video messages have been of assistance in engaging with every member of our Province, which will be further enhanced by regular publications of West Kent News. These editions will be comprehensive and include contributions from every member of the team who has a functional responsibility, which I hope you will find informative and of interest.

I know you will be equally as disappointed as me that our Provincial Grand Lodge meeting in May had to be postponed, but am pleased to confirm that I contacted each member receiving an appointment or promotion on the day to convey our congratulations on their achievement. Likewise, given the lack of clarity on when the government will permit us to hold large-scale social gatherings once again, it was felt sensible to postpone the joint Annual Investiture, planned for the date of our Provincial Grand Chapter meeting in November - a precautionary measure taken in order to guarantee the welfare of our members and their loved ones, who would have been in attendance in large numbers.



West Kent News features contributions from our new active Provincial Officers, and on your behalf, I heartily welcome Daniel Spencer, Neil Moakes, Neil Dale, Peter Brooker, Daniel Unthank and Bob Jones, all of whom I know are already making a material difference to our Province.

In the meantime, I continue to be overwhelmed at your unity of purpose and camaraderie during these difficult times and it only remains for me to offer my heartfelt thanks to our enormously hard working Executive in the Craft and the Royal Arch, to our hard working Secretariat, and to you all for making membership of our Province as compelling, rewarding and enjoyable as possible.

Kindest regards,

Yours sincerely and fraternally,

Mark Estaugh  
Provincial Grand Master - Grand Superintendent.

**WEST KENT  
MASONS**

The Provincial Grand Lodge of West Kent proudly presents

***'Ask the Provincial Grand Master  
& Grand Superintendent'***

an opportunity for you to take part in a 'live online' interview & ask questions of

**Right Worshipful Brother Mark Douglas Estaugh  
Provincial Grand Master & Grand Superintendent of  
The Provincial Grand Lodge of West Kent**

**on Monday 13<sup>th</sup> July 2020 at 1930hrs**

This 'live' event will be hosted via 'ZOOM' by  
Assistant Provincial Grand Master Worshipful Brother Daniel J Spencer and is  
**open to all**  
from the newest 'Entered Apprentice' to the most experienced 'Grand Officer'

If you would like to take part or want to ask a question on any topic for the  
Provincial Grand Master / Grand Superintendent to answer, please e-mail it to...

**[APGM4@westkentmasons.org.uk](mailto:APGM4@westkentmasons.org.uk)**

**...by Monday 6<sup>th</sup> July 2020** at the latest

Please include your name, your Lodge name & number, your current rank and  
contact details in any submission so we can ensure that a wide range of questions  
from a broad spectrum of our membership can be asked and answered on the night

We look forward to seeing you there!

This event should not be missed. A rare opportunity to hear our Provincial Grand Master respond to any questions you might wish to ask. Please get your questions to Daniel as soon as possible, and to book your place.

## THE DEPUTY PROVINCIAL GRAND MASTER:

### MARK EYLES-THOMAS

Hello everybody, and welcome to this first full edition of the West Kent newsletter.

I have been tasked to write this article, mainly with a view of keeping you informed of what I have been doing during the suspension period.

Before I do so, I would just like to send my very best wishes to you all, in the sincere hope that you and your loved ones are safe and well.

I am aware that some of our brethren, and their families have been tragically affected by this dreadful virus. Indeed, we have lost members of our Province to COVID-19, and my thoughts and prayers are with all families whose lives will never be the same. I also wish to send my deepest condolences to the brethren who have lost dear friends. I, through personal experience, am very much reminded at this time of year, of what it is like to lose close friends and I would hope that those brethren that are mourning the loss of a friend/brother are being watched over and comforted by others. Please brethren do not suffer in silence. We are all brothers and, as such, are all ready, willing and able to lend a listening ear to any brother in need. Please, please, please bear that in mind.

So, what has your Deputy Provincial Grand Master been doing since the suspension of activities?

Well I am sure that you will all be pleased to hear, that I have been keeping very busy.

On a personal level, my business has been providing services throughout the 'lockdown' period, being given keyworker status from the outset. To this end, my work routine has in the main, remained unchanged and so I can be found, throughout Monday to Friday, at our HQ in Charlton, albeit for much longer working hours than before.





My wife and I have recently celebrated 30 years of marriage, which I am told by her has been absolutely wonderful, although I am sure she is looking forward to the resumption of Freemasonry activities as much as I am.

On a Freemasonry front, the suspension of activity might lead one to think that there is nothing to do, and that the Executive are all enjoying a well-earned rest. In short nothing could be further from the truth. In all honesty, the Province is probably faced with its biggest ever challenge, certainly one that has not been experienced since the cessation of Freemasonry activities during the Second World War. However, we have remained confident as an Executive, that, we will not shy away from this challenge, we will consider all of the ramifications that it might present to us, and that we will face the challenges head-on with a cheerful tenacity, which will ensure our Province's continued success, given the fullness of time.

So, to my everyday routine - Provincial Freemasonry starts for me on a Monday morning when the Provincial Grand Master (ProvGM) convenes his weekly West Kent 'COBRA' meeting. The COBRA Team consists of the ProvGM, his two Deputies (Craft & Royal Arch) and the Provincial Grand Secretary. The meeting usually starts at 10am and lasts for approx. 2 hours. Various topics are discussed and the meeting generates the right amount of work to carry us all through until the next COBRA meeting.

I chair an Assistant Provincial Grand Masters' (APGM) meeting each Friday. This meeting starts at 11am and is usually completed by 1pm. Points covered at the COBRA meeting are passed on to the APGMs for consideration, discussion and/or implementation as appropriate. The APGMs each have the opportunity to discuss their Group's activities in detail and any areas for focus are agreed and subsequently relayed back to the ProvGM (at the following Monday's COBRA meeting) and/or to any other Provincial Officer, as applicable.

During the week, I undertake numerous telephone calls and video meetings with various Officers of the Province as the need arises. Weekly Video meetings may/may not be chaired by the ProvGM. I am the President of the West Kent Light Blues Club (WKLBC) and am extremely proud of the advancements that have been made by the Club and its committee members. The WKLBC is truly a jewel in the Provincial crown and there are many new and exciting innovations that will shortly be communicated to you all. One tip is that if you are a Light Blue in our Province, and have not registered your interest with them, do so immediately. It costs nothing, has huge and exclusive benefits and will keep you regularly informed of what is happening with the Club (see Facebook, Twitter, Provincial Website).

I am also a member of UGLE's sub-group to the Members' Focus Group (formerly the sub-group to the Improvement Development Group), which holds regular video meetings and is currently reviewing the Pathway initiative, and is actively looking for ways in which the initiative, and its resource library can be improved. You will soon share in the advancements that have been made and I am sure that you will agree that this important initiative is evolving into something quite exceptional, and truly beneficial to Lodges.

Although I have oversight of the APGMs, being considered the conduit between them and the ProvGM, I also have oversight of WK Membership, and all the facets involved therewith. I am sure that I do not have to spell out for you the challenges faced when considering member attraction, retention, and retrieval. Suffice to say, that the Provincial 'Holy Trinity', (defined as the Provincial Membership Officer, the Provincial Grand Mentor and the Provincial Grand Almoner) are all tasked with various objectives. These objectives, take into account the various additional challenges/opportunities posed by the Covid pandemic, in-keeping with the principles of the Pathway initiative. As a working group, we are very focused on the 'overall member experience' (sometimes referred to as the 'cradle to the grave' experience) and how it is delivered by the Province. As an example, you will soon see the introduction of an Applicants'/Candidates'/Joining Members' Charter. The Charter sets out certain milestones that are to be achieved to ensure a consistency of approach, by the membership team when applicants, candidates and/or joining members apply to join our Province. There are obviously many more facets to the Pathway and the Holy Trinity's objectives and perhaps in future publications, I can explain to you just how we are embracing every one of them.

In addition, I am responsible to the ProvGM for the effective allocation of his Reps and this requires me to liaise with each APGM regarding their Group's requirements and demands. A new innovation in West Kent this year will mean that each ProvGM's Representative will be assigned a specific Lodge, throughout their tenure as a Rep. This is an extremely exciting advancement, which we hope will conclude in an enhanced relationship between the Lodge and the ProvGM's Rep., and ultimately, with the Group's APGM. With the smooth passage of accurate and timely Lodge information to the relevant parties, we are confident that the Province will be able to focus and distribute its finite resources to assist Lodges with their own (Pathway) advancement, thus providing a more holistic approach/experience.

As a Province, we have also been using this time to consider our working practices and techniques. Technology has obviously, a huge part to play in our future and we are currently exploring the way to enhance numerous processes, through the

implementation of modern technology. In short, we are exploring ways to modernise our administration. Although it might be considered by some that many of our practices date back some 300 years, I can assure you that that is not the case with regards to the West Kent Provincial Office, nevertheless, there is still much to do and the introduction of the General Data Protection Regulation (GDPR), and other legislative controls, and of course the concerns associated with the Covid-19 outbreak, means that we, as a Province, must take on board wholeheartedly, our responsibilities (and our duty of care) to ensure that we are compliant.

On a final note, it is around this time that the Provincial Office contacts Lodge Secretaries to obtain information from them regarding promotions and first appointments for the May 2021 Provincial Grand Lodge meeting. This is an area that we are hoping to enhance and improve through technology and my fingers are crossed that this will be the year that we are able to achieve this.

So there you have it. A few items that have kept me busy over the past few months and, I am sure, will continue to do so in the future.

I will end by saying that I do hope that you will all remain safe and well throughout the continuance of the suspension. We of course all look forward to getting back to our Lodges and meeting with our friends and colleagues but we must not let our enthusiasm and excitement to reconvene our meetings (when it is safe and legal to do so) place any of our members at risk, or be considered a movement that discriminates against those who may be shielding, and as such, unable to attend meetings.

We are and always will be a fraternal and benevolent Organisation that holds uppermost in mind the wants and needs of our members, and to this end, may I proffer that a 'one for all and all for one' philosophy, at all levels of the Organisation, will see us all safely through these uncertain times.

Personally, I for one will happily forego any formal meetings, over the next 12 months or so, rather than lose one more of our members to this dreadful and unforgiving virus. In time there will be a vaccine, and in time, we will return to a sense of safety and normality, whatever form that may take – so please be patient.

Well I hope to have kept you all best informed of what I have been up to. I am always very happy to hear from you, on a personal or Provincial basis, and can be reached through my usual contacts and/or my West Kent email address [dpgm@westkentmasons.org.uk](mailto:dpgm@westkentmasons.org.uk)

Until we meet again take good care and stay safe.

Yours sincerely and fraternally,

MET



Mark Eyles-Thomas supporting the Light Blues Club as its President, flanked by Paul Holmes as Vice-President, and the Club's Chairman, Mark James.

## A MESSAGE FROM THE ASSISTANT PROVINCIAL GRAND MASTERS (APGMS)



At Provincial Grand Lodge in May we would have had the opportunity to congratulate, and to say a fond farewell to W. Bro. Eric Hampson as Group 4 APGM after many years of dedicated service to this Province, and to welcome W. Bro. Daniel Spencer into the team as our newest APGM. Eric has been an integral part of this APGM team, and we have enjoyed his company and his advice & guidance over the years - 'Good Luck for the future Eric'. By the same token, we welcome Daniel to the team, he has large boots to fill, however, he is already making his mark - 'Welcome to the team Daniel'.

We are all I am sure, looking forward to when Daniel can be invested properly and we can thank Eric appropriately, for his service.

As you are all aware, The Grand Master suspended all Masonic activity on 17<sup>th</sup> March 2020 for four months due to this awful pandemic. This has proved to be the right measure because the Government placed the whole Country in 'lockdown' a few days after the GM's announcement. The pandemic has been devastating and it has affected many of our families, our Brethren / Companions, and our friends.

Further, this suspension could not have come at a worse time for our Province, as we had only recently had a very successful start to the MCF 2026 Festival, and our Provincial Grand Master had switched on the afterburners in pushing forward with many innovative projects.

Although we are in Masonic suspension, the APGMs (as well as the rest of the Provincial Team), have continued to be very busy on Masonic work, in fact some of us have never been busier.

Since lockdown, we have attended Zoom meetings every week with the DPGM, and our monthly Meetings with the Provincial Grand Master have continued (again since



lockdown these have been Zoom meetings). A wide variety of subjects have been discussed, but the overriding focus has been to ensure that:

1. we are doing all we can to assist those of our members who are suffering during this pandemic;
2. we are fully engaged with our community and those charities who are assisting with the fight against the pandemic;
3. we are keeping our members engaged and informed during this difficult time, so that they continue to be proud to be a member of this benevolent and relevant organisation of ours.

We are so proud of the Brethren who are giving their time to assist the community at this trying time. You will have seen from the posts on our website and social-media channels that our Province is also making a positive impact within the community, and of course we are mindful of those members of West Kent who are suffering due to this pandemic. The West Kent Emergency Fund is an example of how the Province is assisting our members in this difficult time.

On a wider note, one of the projects in which the APGMs are currently involved is preparing our ProvGM's Representatives for a new way of working when we resume our Masonic activity – the Provincial Grand Master will give more information on this shortly; however, be assured that the Reps will be fully briefed and ready to go when we get the green light.

The APGMs are also keeping in close contact with the Lodges in our respective groups and we attend Lodge Zoom Meetings as often as possible. You will also have seen the regular video updates given by our Provincial Grand Master, as we wish to keep all our members informed of what is happening in the background, so that we are all well prepared and eager to return to meetings when it is safe to do so.

I hope this has given you a brief insight into some of our APGM duties during this pandemic. We thought we would also give you a light-hearted glimpse into our histories with a short quiz.

## **'The APMGs - WHO DO YOU THINK THEY ARE?'**

Our new APMG Daniel Spencer will already be known to many of you, as is our Deputy Provincial Grand Master Mark Eyles-Thomas and the other three Assistant Provincial Grand Masters James Marsh, Andrew Waddington and Colin Holland. But what do you really know about the men behind the Chain? Find out in the 'WHO DO YOU THINK THEY ARE?' Quiz.... Answers below.

1. Can you work out whose picture is which APMG and who is our DPGM?



Images 1, 2, 3



Images 4 & 5

We also asked the DPGM and APGMs a range of questions to help you get a glimpse of their backgrounds, can you work out who gave the following answers to the eight questions? Some of the answers may not be what you were expecting.

1. How many Craft Lodges, Royal Arch Chapters and other Orders membership do you hold?

- a. 6 Craft lodges & 2 RA Chapters.
- b. 4 Craft Lodges, 1 RA Chapter, 1 KT, 1 Rose Croix, 1 Mark, 1 RAM.
- c. 4 Craft Lodges (three West Kent and one London), 3 West Kent RA Chapters, and 1 East Kent Rose Croix Chapter. 11 Craft Lodges (in West Kent and am joining a London Lodge shortly),
- d. 4 West Kent RA Chapters. I am a member of the Mark Degree and a member of Rose Croix
- e. 4 Craft Lodges, 2 RA Chapters, 1 Mark Lodge (Kent), 2 Knights Templar Preceptories (Kent) and 1 Commemorative Order of St. Thomas of Acon Chapel (Kent). I am also an Honorary Member of 3 West Kent Lodges.

2. List three facts about you that Members will not know?

- a. I once played a Jazz duet on piano with Bruce Forsyth. I escorted Miss World to a Rugby match in Cardiff; and narrowly missed colliding with the Archbishop of Canterbury's 'Special envoy' (Terry Waite) when he walked out in front of my car in Blackheath, a few weeks after he was released by his terrorist captors. Thank God I missed him!
- b. I once kissed Miss World; I am a Judo Black Belt; I am a Magistrate.
- c. I was the only Kent School Cricket Association Under 11 Player to be awarded his Kent cricket cap for performance and not for number of games played (qualification) - the award was for 7 stumpings in a game against Newport Cricket Club (South Wales); I
- d. was a co-owner of a business in Barbados for a number of years; I once drowned an Aston Martin DB7.
- e. I was commended for Bravery by the Commissioner of Police, Director of Public Prosecutions and a Judge at The Old Bailey after tackling an armed robber whilst I was a serving Police Officer. I was off duty at the time. He tried to shoot me twice, but the gun jammed. I did a ten minute talk in person to Princess Anne during a Junior Citizen week in Southwark. As a Schools

Involvement Officer, I appeared in an episode of Blue Peter conducting a piece on cycle safety. Yes, I do have a Blue Peter Badge, as a result of my appearance.

- f. I was a choirboy at St Peters & St Pauls Church in Bromley, the same Church where I was married some 20 odd years later; I was an amateur boxer for a short time and attended Marvels Lane ABC; I have worked in a number of the Royal Palaces and State Buildings as an apprentice decorator, then as a Surveyor when I quickly changed careers.

### 3. Which hobbies do you have outside of Freemasonry?

- a. Photography, going to decent restaurants, oh and I am a very bad abstract artist...
- b. I enjoy sporting events and the thrill of a great game/competition. I have been fortunate enough to be present at a FA Cup final (Liverpool v Manchester United), a European Cup Final (Bayern Munich v Manchester United) and two World Cup finals (France v Brazil) and (Rugby Australia v England). I would add, that I love to travel with my family and that I enjoy socialising / good company.
- c. Spending time in my three and a half acres of woodland in East Sussex doing maintenance, staying overnight in a hammock, cooking over a fire and just generally getting away from everything. I also enjoy Paddle Boarding, walking and of course, socialising...
- d. Country Walks, Golf & watching football
- e. Flying - Learnt to fly helicopters at age 21 (no longer a valid licence but still fly Paramotors). Cars, I am a complete petrol head and have a passion for 80's British Muscle cars. Finally, archery - Robin Hood Men in tights - that's another story...

### 4. Why did you join Freemasonry?

- a. To unravel the mysteries and find the 'Holy Grail' of course. Seriously, my Father was a Freemason, but it was a work colleague who raised my interest and eventually introduced me to the Craft.
- b. I befriended an elderly Freemason (I did not know he was at the time), whose wife had died at home. After having to attend and report it for the Coroner's attention we eventually became friends. He invited me to join Freemasonry and the rest, as they say is history.

- c. My interest in freemasonry was tweaked by my first boss, he was somewhat of a charismatic man, and I was curious to discover why freemasonry played such an important part in his life.
- d. My Grandfather was a Mason and as a young kid I used to see him come home from meetings in a great mood, laughing and joking, and I thought, 'when I'm older, I want some of that!' He got me in and I've never looked back!
- e. I read the Masonic 'exposé', The Brotherhood in the 1980s, and did not believe a lot of the nonsense that was in the book. I had three uncles who were London Masons and their character could not be further from the type of 'Freemason' depicted in the book. I eventually decided to speak with some people who drank in a local pub who I knew were Masons. They eventually Proposed me into a Lodge at Bromley.

5. Which is your favourite Band/Singer/Genre of music?

- a. I have an eclectic taste in music from Jazz to Blues, The Beatles, Elvis, The Sex Pistols, Iron Maiden etc. In fact, apart from Disco music I like most genres.
- b. Difficult, but the first that made a lasting impression on me was Hotel California - The Eagles.
- c. Hmmm Difficult one. The Hollies / Matt Munro / Show tunes darling!
- d. Erm, I think it's got to be the mighty Quo (the original band in the 70s), although I like most music from the 70s. Oh, and of course I enjoy going to see my son's band.
- e. I will listen to all types of music. Kiss ("the hottest band in the world"), were my favourite band as a youngster and I went to see them recently at the O2, with my family. Back in the late 70s, I liked Queen and Abba too, but wherever I have been in this world, Simon and Garfunkel have never let me down.

6. Has anything funny ever happened whilst you have been in a Meeting?

- a. I paraded into a RA Chapter when I was a Deputy DC to announce my Charge (a Second Provincial Grand Principal) and noticed that the Principals of the Chapter were wearing the wrong coloured robes. I tactfully mentioned this to the Scribe E as I took the Escort out of the Chapter ready to welcome the Second Principal and I could hear a huge kerfuffle behind me as the Principals rushed to exchange their Robes...



- b. Plenty! I won't go into too much detail but once, during a 3rd, at a rather important moment, the head of the Master's gavel accidentally flew off, brushed past the candidate's ear and ended up at the other end of the temple. No one told him it was an accident and the candidate was impressed with the Master's 'accuracy' at not hitting him in the face.
- c. That's a tricky question. A Deacon was perambulating around the lodge room with a candidate when he bumped into the Junior Warden's column. Thankfully, the JW acted swiftly and caught the column, but the globe was knocked off in the process. The Deacon didn't know whether to stay with the candidate or go after the globe, needless to say, someone came to his aid but it caused a few ripples at the time.
- d. Quite a few funny incidents. One such incident, at my expense, was whilst giving salutations to Gordon Davie (God rest him), at my Mother Lodge where he was attending as my guest. He had previously pulled me up whilst out on Official Duty as a Provincial AGDC for daring to give a Taylor's ritual salute instead of the mandated Emulation ritual salute. At the time of his visit I was IPM and I couldn't manage to get the full Taylor's salute in due to the proximity with the back of the Master's head, so had to resort to an Emulation one. As soon as we had finished, Gordon, in true Davie fashion, at the top of his voice piped up, "look he thinks he's on Official Duty he's doing totally the wrong salute. This is a Taylor's Lodge. He's doing Emulation. He doesn't even know what ritual he's supposed to be doing". Needless to say, it was all done in jest. Everyone was in stitches and Gordon had a whole new batch of younger Masons who found a deep respect for this mischievous man. At my expense Gordon had introduced a funny interlude into the proceedings.
- e. Regularly and that is why I would recommend our fraternity to others without hesitation (*very tactful... editor*)

#### 7. What make/model was your first car or motorcycle?

- a. Mk III Ford escort 1600 Ghia! (Classy) / Yamaha DT125cc.
- b. White Morris 1100, it was shot to bits, but it felt like I had wings.
- c. I didn't drive until 1986 and always rode Motorbikes. My first was a Yamaha RD200. It was a fast bit of kit. First car I drove was a 1975 (P Reg) Mini 1000.
- d. My first motorcycle was a Yamaha FS1E (yellow with racing 'A' handlebars). My first car was a Wolseley 1100 (maroon). It was dire and the gear stick frequently came out in my hand when driving (thanks Dad).

- e. Car - MkII Cortina. Motorbike - Kawasaki Z250 (I ordered a ZIR 1000 Kawasaki the same day that I passed my motorcycle driving test...)

8. What was your first job?

- a. Like many of my age group I had a newspaper round, and when I left school, an Apprenticed Decorator.
- b. Apart from washing cars for a local second-hand car dealer and a paper round my first 'proper job' was as a Saturday Boy in Bobbies Shoes, on Catford Bridge.
- c. Putting the paper round to one side I joined the British Army as a boy soldier at 16 and became a Junior Infantryman.
- d. I was a butcher's boy whilst at school.
- e. In the summer after I left school, I got a Saturday job in my local petrol garage as a pump attendant.

## ANSWERS

Picture 1 – Colin Holland

Picture 2 – Daniel Spencer

Picture 3 – James Marsh

Picture 4 – Mark Eyles-Thomas

Picture 5 – Andrew Waddington

Q1: a, CH; b, DJS; c, JJM; d, MET; e, ACW.

Q2: a, DJS; b, JJM; c, MET; d, ACW; e, CH

Q3: a, JJM; b, MET; c, ACW; d, CH; e, DJS

Q4: a, MET; b, ACW; c, CH; d, DJS; e, JJM

Q5: a, ACW; b, CH; c, DJS; d, JJM; e, MET

Q6: a, JJM; DJS; c, CH; d, ACW; e, MET

Q7. a, DJS; b, CH; c, ACW; d, MET; e, JJM

Q8. a, CH; b, ACW; c, MET; d, JJM; e, DJS

## NEW ASSISTANT PROVINCIAL GRAND MASTER FOR GROUP 4:

**DANIEL J SPENCER**

When asked how he feels about his appointment and what his plans for the future are, Daniel says....



"It is an honour to be asked to take on this role by our Provincial Grand Master. With the position, comes huge responsibility. It's certainly not a job for the faint hearted and I have not taken it on lightly. I'm under no illusions about the amount of work, time and effort that will be required to perform the role well. My enthusiasm and love for the craft (as anyone who knows me will tell you) is boundless. Whilst I'm undoubtedly one of the youngest APGMs in the country, you can rest assured that I, like the rest of our dynamic Executive team, will

give it my all. I've been shadowing my predecessor (who has done a superb job during his tenure) and my Executive colleagues since Christmas to ensure that, come my appointment in May, I would hit the ground running".

"Being a type 1 diabetic and therefore at 'high risk' of infection, taking over Group 4 Lodges whilst isolating in the middle of the COVID19 crisis has been a real challenge. After what would have been our Provincial Grand Lodge meeting in May, I was planning to hold a 'meet & greet' in the bar at Oakley House to meet the key team players from the 37 lodges that I am now responsible for. I wanted to introduce myself and really get to know them, chat about their worries, concerns, plans and ideas for the future. As that couldn't happen, I've spent a lot of time chatting to lodge secretaries through a series of 'Zoom' video conference meetings. These meetings have been really useful for me and I've now got a good understanding of the current 'state of play' and, as to how I can assist my Lodges and their members."

"I've since written to all members in my group, through their Secretaries, to try and stimulate some conversations around a series of ideas that spring from the 'Members Pathway'. The only good thing to come out of the COVID19 crisis is an opportunity for

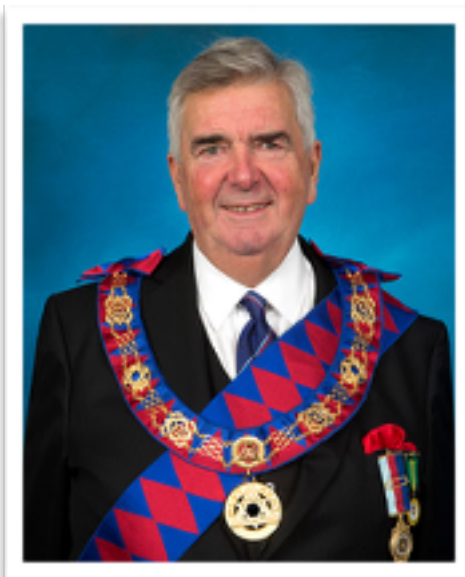
us to pause, review and take stock of the way we operate. If we use the time wisely, I am confident that with the help and enthusiasm of West Kent's superb support network (including our Provincial Grand Master's Representatives, our Communications team, Education team, Membership team, Group Mentors and Group Almoners etc), we can help any Lodge that wants to grow and has the will to develop going forwards."

"I'm really excited to be a part of what I believe to be the most forward thinking Executive team in the country. I can't wait to get cracking and am really looking forward to seeing my friends and Brothers again once the science says it's safe to do so!"

---

## **THE DEPUTY GRAND SUPERINTENDENT:**

### **BRIAN SAUNDERS**



This has been a very strange 3 months for us all and I know, from the many telephone calls that I have made and received, that it has been a difficult experience for many. Members of our Province have been affected by the COVID-19 virus in many ways and my thoughts and prayers are with all who have, or are still, suffering in some way from this dreadful pandemic. The Royal Arch Executive have made every effort to keep in touch with our Chapters so that we are able to offer support where required and it has been extremely encouraging to see Chapters holding virtual get togethers that have helped many through this period of enforced isolation.

I attend a Zoom meeting every Monday morning with the PGM/MEGS, the DPGM and the ProvGSec where the welfare of our members takes absolute priority and the establishment of the West Kent Emergency Fund was the result of our first deliberations. The Board, who are now administering the Fund, are doing a superb job to support individuals who need assistance as well as local organisations where we can make a difference.

Obviously the welfare of the Province is our other major concern and a great deal of our time is taken up considering the future and in particular, the manner in which we can resume our meetings, as and when that becomes a realistic possibility. I can

assure you that the safety and inclusivity for all members will always be a major factor in our deliberations.

To ensure that the HRA team is fully engaged in this work we hold regular Zoom Executive meetings and the normal administration of business is maintained. The Executive are now in the final stages of determining this years Honours recommendations to submit to the ME Grand Superintendent. The recipients would normally be notified in the near future, but with the postponement of Provincial Grand Chapter until 2021, notification will now be held over until the end of the year.

The other major initiative that we have been concentrating on is recruitment. I am sure that it will come as no surprise to you when I say, that the Degree of the Holy Royal Arch remains the most significant and inspiring Order that I am associated with. From the superb Exaltation ceremony, through the knowledge that one accumulates in time and on through the privilege of Office, I can honestly say that The Order of the Holy Royal Arch and the Companions of that Order have made it an experience that I have enjoyed for over 40 years. The great privilege that I have as Deputy Grand Superintendent is to encourage all qualifying Master Masons to consider joining the Holy Royal Arch and then to make every effort to ensure that they enjoy the experience of the Order. In our Province just under 50% of our Brethren, who are qualified to join, are members of the Holy Royal Arch and the Provincial Grand Master, who is also the Grand Superintendent, has clearly stated that he considers membership of a Chapter should be the culmination of every West Kent Mason's Masonic journey and my Executive are committed to encourage everyone to consider completing this journey. We are looking for ways to improve the HRA representation in those Lodges where the proportion of members who are also Companions is below average. This review is looking at everything from the first critical link in the recruitment chain, the Lodge Royal Arch Representatives, right through to Chapter membership teams and the Provincial support that is available throughout that process. The Second Prov. Grand Principal Alan Cope, has responsibility for recruitment and in the next edition, he will expand on our deliberations

The Holy Royal Arch Executive comprises the Most Excellent Grand Superintendent Mark Estaugh, myself as his Deputy, Excellent Companion Alan Cope is the 2<sup>nd</sup> Provincial Grand Principal and Excellent Companion Bipinchandra (Bipin) Patel is the 3<sup>rd</sup> Provincial Grand Principal. Excellent Companions Anthony (Tony) Burd and Michael Page are the two Assistants to the Provincial Grand Principals. The team is completed by Excellent Companions David Campbell, our Prov. Grand Almoner, Excellent Companion Chris Ashby, our Prov. Grand Director of Ceremonies and Excellent Companion Paul Christopher our Prov. Grand Scribe Ezra. In a future edition of West Kent News our 3<sup>rd</sup> Prov. Grand Principal Bipin Patel, who has responsibility for



member retention along with our Prov. G Almoner David Campbell, will outline our plans for the next year in that area.

I have been tremendously impressed by the very positive way that Companions and Chapters have responded to the very challenging circumstances that we have found ourselves in and how many have met that challenge by supporting organisations and frontline services. This has raised the profile of Freemasonry among our communities while making a vital difference in so many areas. Thank you for your continued efforts on behalf of all those who benefit from them and I pray that you will stay healthy and safe.

As the return to some form of normality continues its necessarily slow progress, I find it helps to look forward to future highlights. In particular I refer to what I am sure will be a splendid celebration next year, when the whole Province meets together for the first time at Freemasons Hall for a joint Holy Royal Arch and Craft Honours Ceremony both being open to all Freemasons, their families and friends to attend. It promises to be a very special day and certainly one not to be missed. I will write about this in a future edition.

As I said at the beginning, the welfare and safety of our membership is the priority for the Provincial Executive and I have experienced through the great work being done by our Almoners and others that this is a concern that unites us all. I assume that normal service will probably not be resumed until an effective vaccine is available so let us be patient, enjoy the social contact with our Brethren and Companions through virtual media, support those in need and continue to practice the great precepts of Freemasonry to the benefit of those less fortunate than ourselves. Please stay safe and healthy,

Yours sincerely and fraternally,

Brian

Deputy Grand Superintendent



The Royal Arch Exec holding a weekly Zoom meeting.

## **THE PROVINCIAL GRAND SECRETARY and PROVINCIAL GRAND SCRIBE E: PAUL CHRISTOPHER**

### **THE PROVINCIAL OFFICE POST COVID-19**

Firstly, I would like to thank everyone (for the most part) for their patience and understanding since March. I had been made aware the day before of the impending statement from the Most Worshipful, The Grand Master, regarding the four-month suspension starting on 17 March. That day was my birthday and I had just arrived at a restaurant for lunch to celebrate when my mobile confirmed the suspension. I then turned off the 'phone and sat down to a very enjoyable lunch with friends. To date that was my last meal out.



Of course, leading up to the suspension was also challenging; many Lodge and Chapter meetings had to be abandoned due to members' uncertainty over COVID-19. The suspension of all Masonic activities certainly took the pressure off Secretaries and Scribes E who were still trying to organise meetings with memberships understandably more concerned with their wellbeing, than their ritual.

Oakley House and, as a consequence, the Provincial Office was locked down on Monday 23 March. I had a couple of hours that morning to load my car with everything needed to work from home. Some of the Office staff have remote access to the Office computer, but much of the work still arrives at Oakley in paper form to be processed. The post will be addressed when we can return.

After the initial lull in activities members inevitably started asking questions. All the "whens", "hows" and "whys" were asked with good intent, but ever-changing views over COVID-19 precluded being able to advise with any degree of certainty. Bizarrely, a "question and answer paper" from UGLE only intensified queries.

Every Monday morning the ProvGM, DepProvGM, DepGSupt and I meet via Zoom. Member welfare has always been the main topic of discussion. The idea of a West Kent Emergency Fund was developed, and behind the scenes the Team tasked with establishing the Fund did incredible work to get it up and running so expediently.

It was decided very early on, that we needed to manage members' expectations. Provincial Grand Lodge (in May) had been cancelled due to the suspension and it quickly became apparent that Provincial Grand Chapter would be unviable too. It has since been cancelled.

Sadly, we have missed the opportunity to celebrate several prestigious events. Long Service citations for 50 and 60 years have had to be posted directly to recipients. An additional letter expresses the hope that the ProvGM / GSupt, his Deputies or Assistants will have the chance to present the accompanying lapel pins when meetings resume.

Since the beginning of March until the end of July the following long services are noted.

Name	Year	Date	Lodge / Chapter	No.
James Richard GARDINER	50	02/03/2020	Edenbridge	7462
Tony William WRAY	50	11/03/2020	Greenhythe	5449
Derek HUNTER	50	14/03/2020	Seven Stars	6417
Derek William LEE	50	17/03/2020	Lodge of Emulation	299
Barry Keith TURRELL	50	17/03/2020	Thamesmead	8269
Alan Arthur John SHEPPARD	50	14/04/2020	Mottingham	6753
George HENDERSON	50	14/04/2020	Oakwood	8299
Kenneth Richard LORBERG	50	15/04/2020	Saye and Sele	1973
David George Gordon HILL	50	25-Apr-2020	Priory	5819
Burness George Alfred JAMES	65	28-Apr-2020	Loyalty and Remembrance	5842
Christopher Owen DAY	50	02/05/2020	Lamorbey	5614
Brian Bernard BENNIE	60	03/05/2020	West Wickham	2948
Kenneth Allen STOTT	50	07/05/2020	Good Neighbour	8378
Horace Raymond HOLLEDGE	60	09/05/2020	Ravensmead	6404
Jeremy Keith BROWN	50	15/05/2020	Eynsford Castle	8684
Colin Raymond REESTON	50	20/05/2020	WK Stewards	8565
Stephen Henry CLARKE	50	23/05/2020	Albany Park	7432
William Thomas WATKINS	50	13/06/2020	Lamorbey	5614
Barry Keith WILLIAMS	50	15/07/2020	Hermes	77

On behalf of the ProvGM the Office was delighted to coordinate producing, posting and assimilating responses from 80 letters of extra Craft preferments. It was the intention to invest the Brethren during a celebratory sesquicentennial meeting of Acacia Lodge on 15 June.

Other anniversary meetings of note this year include:

Lodge / Chapter	No	Anniversar	Anniversary date:
Desaguliers	8324	50	18/06/2020
Mandalay	9383	25	26/06/2020
Lee-Kent	4110	100	24/07/2020
Lakedale	4044	100	11/10/2020
Manor Way	6161	75	29/10/2020
Richard of Bordeaux	8333	50	04/11/2020
Paddlesworth	6162	75	14/11/2020

Though we were unable to celebrate Acacia Lodge's tremendous achievement in the manner we had planned a number of the Craft Executive were delighted to accept an invitation to join a Zoom meeting with the Lodge members on 15 June.

If any Lodge or Chapter is looking to hold a celebratory event and would like a member of the Executive to join a Zoom meeting please email me and I will check availability.

Whilst the Government is starting to relax its guidelines on gatherings and distancing, realistically we are some way off from resuming our Freemasonry to any level resembling the past. Even once the Government has indicated we can meet we must wait for further guidance from UGLE. Resumption is bound to bring extra peculiarities in the way we operate. Our Masonic Centres will no doubt be advised on additional procedures they will need to put in place for the safety of both staff and Masons.

I understand that while many will be champing at the bit to return many will be reticent. We must be sympathetic to all our Members' needs. I would love to be able to give you the complete formula for our return. I know the Rulers and their various committees are considering every angle for our safe return, how we return and many other items including the performing of degrees with any prevailing social distancing.

Ultimately on behalf of the Provincial Office I need to ask for your patience. Planning too far ahead might involve much work that could be quashed by any special measures that may be introduced.

Finally, I would like to acknowledge my gratitude to Roy Huntley, ProvAGSec, and Martin Davies, ProvAGSE, who give constant support, and are both working from their homes. Many of the Office volunteers are keen to get back to the Office and I am so grateful for their resolve.

I wish you all the best of health and look forward to seeing you soon.

*(All information in this article, is accurate as at 24<sup>th</sup> June 2020).*

---

## **THE PROVINCIAL GRAND TREASURER: PETER SAWYER**



The important role and functions of a Treasurer have never been so prevalent, as they now are during these unprecedented times, so I thought it might be appropriate to update you on the financial affairs of both the Provincial Grand Lodge - General Fund and Charity Fund. Also, to encourage Treasurers to review the status of their Lodge or Chapter accounts and prepare for their fiscal year end.

General Fund - At last year's fiscal year-end total assets consisted of cash and an investment managed by UBS. A decision was made earlier this year to appoint a fresh investment manager and somewhat fortuitously, we instructed the sale of the UBS fund just prior to the stock market decline

in share values and due to the current uncertainties decided to retain the cash, rather than reinvest.

Our main source of income is annual dues, from which we have expenditure items somewhat similar to those of a small company, albeit we currently do not have any salaried employees. Most of the expenditure items, such as rent, services and IT support are fixed costs, so we are still very dependent on annual dues to cover expenditure, however, although future costs may rise, I can confirm that we will not increase the current level of dues on 1<sup>st</sup> November this year.

In summary we expect this fiscal-year's income to cover expenditure and thus, by maintaining the level of our total assets year on year, we may be able to assist certain



entities who may be experiencing extreme financial difficulties during this difficult period, by way of secured loans.

Charity Fund - The assets of the Fund are primarily invested with Quilter Investment Management and the capital, which was initially invested, was raised following a Provincial initiative, after the 2005 Festival, in order to create a restricted Portfolio where the income could be used for Provincial grants and Community funding projects. The Provincial Grand Charity committee regularly consider applications for appropriate donations and many worthy local charities and groups have significantly benefited.

Due to the current pandemic the decision was taken to form the West Kent Emergency Fund, with the view to assist Brethren and Companions who may experience extreme financial difficulties, as well as support to local charities and groups who have been directly affected by COVID-19. Excess income accrued in the Charity Fund over a number of years, together with MCF funding, has enabled the WKEF to have £100,000 at its disposal, although we are conscious that the overall assets of our Charity Fund must have sufficient monies available for other worthy causes now and in the future. The WKEF has been extremely active since its formation and many worthy causes in the Province, as well as individuals, have already benefited.

The challenge for all Treasurers is similar to mine, in that the source of Lodge/Chapter income is primarily from annual subscriptions. Expenditure items may differ, however many of these are likely to be fixed costs and even in these difficult times, it has been rightly encouraged to support your respective Masonic Centres, Tyllers and Janitors, even when meetings are not able to be held

Although meetings are currently suspended, I would respectfully request that all Treasurers review your accounts and consider the following: -

- It may be that due to meetings not taking place that some members subscriptions are outstanding, so a gentle reminder would be appropriate, however sympathetic judgement should be exercised in case a member is financially challenged due to the pandemic.
- You may be holding cash from your last meeting, so arrangements should be made for these monies to be deposited in the bank account, as soon as possible.
- There may be outstanding expenditure items, so please make appropriate arrangements for these to be paid.

- Ensure that sufficient monies are available to pay annual UGLE/SGC and Provincial dues at your fiscal year end, which of course are due in arrears.

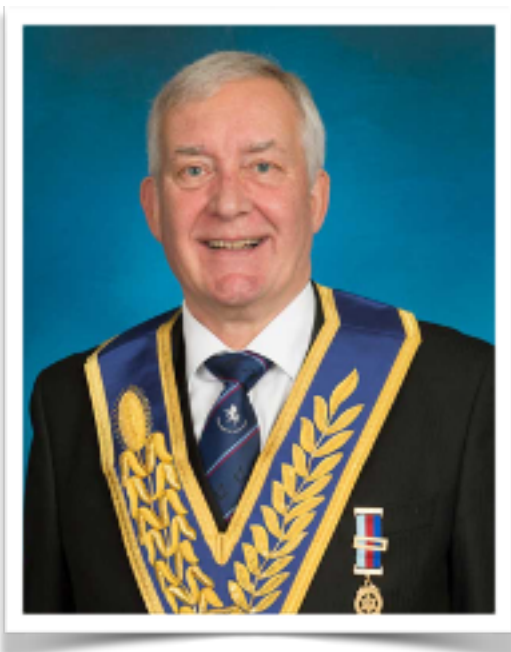
To greatly assist efficiency and timely monetary movements electronic banking is becoming more important. This is strongly encouraged both in the receipt of annual subscriptions from members and payments, such as annual Provincial dues, Masonic centre and dining costs, so serious consideration should be given to moving to this type of arrangement.

As a guide to Treasurers responsibilities and duties I have recently updated the "Information for Treasurers" and "Example Accounts", on the Provincial website: [westkentmasons.org.uk](http://westkentmasons.org.uk), which I would encourage you all to take the time to read.

I am always very happy to hear from any Treasurer who may require guidance or advice, so please do not hesitate to contact me. My email address is [petesawyer@btopenworld.com](mailto:petesawyer@btopenworld.com), or by phone on my mobile: 07769 337780.

---

## **THE PROVINCIAL GRAND SUPERINTENDENT OF WORKS: IAN MACKNELLY**



The suspension of Masonic meetings, effective from 17<sup>th</sup> March, posed an obvious threat for the viability of our Centres: this potential difficulty has since been compounded both by the continuing uncertainty as to when Masonic activity will resume, as well as confusion over what that activity might look like. The current social distancing regulations have an obvious impact, both in terms of our ritual and our Festive Boards.

Many of you will have read UGLE's "First Rising" of 1<sup>st</sup> June, but I repeat one salient point here, in case it was missed:

"As soon as government guidance changes to allow groups of ten or more people from different households to meet indoors, it is expected that a lifting of the suspension of Masonic activity will be announced. The resumption of meetings will take place fourteen days after the announcement or on the date, if later, on which the government guidance becomes effective."

None of us know when the current suspension will be relaxed and likewise, we can't guess how many brethren will initially be able to meet behind closed doors and whether or not the current "social distance" measure will be reduced below two metres. Nevertheless, and despite this uncertainty, I have recently written to our Centres' Chairmen and Secretaries, urging them to give serious thought to the steps that need to be taken, to ensure our Centres are ready to accommodate demand from Lodges and Chapters, once the green light is given. As you would expect, many of these worthy brethren are already well ahead of the game!

The points I have made are all aimed at ensuring that the members of our Lodges and Chapters can meet in as safe an environment as humanly possible, acknowledging the principal twin challenges of **maintaining social distancing** - whatever the specific rule might be at any one time - and **ensuring the existence (and use) of adequate sanitisation facilities**. Specific suggestions touched on:-

- The need to provide a general guidance note to Secretaries and Scribes E, to pass on to members, including, for example, a general stipulation that brethren who are unwell or displaying symptoms of COVID-19 - or who have been in contact with someone with the illness - should not attend. Likewise, vulnerable brethren should be asked to stay away.
- Advice on arrival and departure times.
- Conduct on arrival - with specific reference to hand sanitisation and social distancing.
- Use of lavatories and changing facilities.
- Conduct in the Temple, particularly relating to seating arrangements (dependent on the social distancing measures in force at any one time).
- Bar, catering and dining arrangements.
- General cleaning of Temples, lavatories etc in advance of meetings.

Leaving aside the measures necessary to ensure a safe return to our meetings, you might be interested to know that many of our Centres' car parks were considered for use by NHS staff and other Key Workers. Subsequently, the larger car parks have been advertised as being available for use as COVID-19 testing centres. To the best of my knowledge, none of these initiatives have yet been taken up.

On the financial side, I have been heartened by reports that the majority of Lodges and Chapters have continued to pay Centres' charges for those meetings which have been missed during this period of suspension, together with many generous donations to Centres from Lodges, Chapters and individual brethren.

This generosity, when coupled with

- successful applications for grant aid in respect of all Centres, (excepting Oakley House, where the Rateable Value is way above the upper qualifying limit), producing a total of £140k and
- twelve months' rate relief for all five of our larger Centres, (the smaller four Centres already qualify for 100% "Small Business Rate Relief"),

means that our Centres will be able to remain financially viable for longer than originally anticipated.

---

## THE PROVINCIAL GRAND ALMONER:

### NEIL MOAKES



With our Masonic lives on hold many Brethren have been turning their attention to ensuring that the Brethren of their lodges are well catered for, and it warms my heart to read of the generosity of Brethren, offering time and services to support those who are in need. It is true that we are all Almoners and the care of our fellow members, their families and widows is our shared responsibility, and it is one that the majority take on as a pleasure rather than an obligation.

The Lodge Almoner, now more than at any other time, is one of the king pins of the Lodge, and its vitally important that each member makes him aware of any Brother that may be in need of support. Almoners are not mind readers, they can only perform their function if they are aware of any concerns. There is a huge wealth of help available for Brethren, ranging from just a friendly voice at the end of a phone, through grants from the West Kent Emergency Fund, right up to major grants from the MCF to help with daily living expenses, something that is particularly important at the moment where so many are struggling financially due to the lockdown. Please remember that communication is key to the success of our duty of both Brotherly love and Relief.

It is a fact that our organisation has many members who are shielding because of age or health issues, and many of these may be feeling particularly isolated and lonely, and a call from a Brother is a welcome interruption to isolation. There are also many who are concerned for their financial wellbeing and are suffering hardship which has

been forced upon them, completely outside of their control. It is vital that all our members are aware of the help that is available, by visiting the members welfare section of the West Kent website <https://westkentmasons.org.uk/members-welfare/>.

I particularly want to highlight the counselling careline, which is funded by the MCF but is independent of the charity. This is a confidential and free helpline operated by trained counsellors who will listen and offer professional guidance. Everyone is affected by life's twists and turns but may react in different ways. Much of the awareness and research regarding mental health issues has focused on women, who are twice as likely to seek support as men. However, of the 4,000 incidents of suicide in Britain each year, 75% are men.

Freemasons, their wives, partners, widows and dependants who are over 16 years old can access the free and confidential helpline. The MCF will issue callers with an individual reference number and access to the Careline. There are no forms to complete or financial assessment required. The service is swift and confidential.

To gain access to help please call the MCF freephone enquiry line on **0800 035 60 90**.

Take care and keep safe.

---

## THE PROVINCIAL MEMBERSHIP OFFICER: MARTIN WHITE-PEAT



I hope this finds all of you and your loved ones safe, well and in good spirit, as I know many of our lives have been touched in so many ways by this current pandemic. The emergence of Covid-19 and the subsequent general suspension of Freemasonry back in March has seen many plans for masonic activities and events go up in smoke or become derailed. The strategy of implementing the "Members Pathway" has not been immune to these events. Having built up a head of steam with the delivery of workshops and subsequent targeted work with individual lodges, overt activity has all but dried up in this new world of social distancing and restrictions on public gatherings. However, much like any other crisis this current pandemic has provided the opportunity for change, positive development, and growth.

The current situation has forced us all to reimagine how we do “business” and has forced us to be creative and innovative in how we address present challenges. A prime example of this is the mass adoption of the use of social media and digital platforms such as WhatsApp, Zoom and TeamApp to keep connected and maintain relationships between members within our lodges. This has enabled us to remain together at a time when we have to be physically apart. As you may be aware from the ProvGM’s videos and the various posts on the Provincial Facebook page, that the Provincial Executive, along with many of the Provincial committees have taken to Zoom to continue to plan and work on your behalf in regards to the management of Provincial affairs. This is to ensure that once this suspension is lifted, that we may all return to a Province that is as healthy and agile as possible, as to regain our stride swiftly with the resumption of masonic activity within West Kent.

With this said, if you haven’t already, it would be wise for you to consider doing the same with respect to your individual lodges. This period of hiatus affords us the ideal opportunity to do a spot of lodge “house keeping” in taking the time to devise a lodge plan and/or strategy in order to get our respective lodges in the best possible shape, to mitigate the impact of this pandemic and ensure a viable and successful return post suspension. Work is underway to collaborate with the APGM’s, the Provincial Mentor and Almoner, along with the Learning and Development team, to provide packages of support to aid lodges in reviewing their current situation, and planning for their futures. It would be remiss of me not to acknowledge that these are genuinely challenging times for many lodges, and it is reasonable to contemplate that some may not see the other side of this pandemic, and from those that do, many will be changed. The key thing here is that where possible, we influence and shape that change to make it a positive force within our lodges.

Managing change starts with dialogue and being alert to your current situation. As such, I whole heartedly recommend for those lodges who have not yet adopted the use of Zoom, WhatsApp, and other communication platforms to do so as soon as possible. Not only are these great tools to check in on the welfare of your members and find solace in a friendly face, they enable you to come together as a lodge to have a critical look at your current situation, practices, officers and activities and whether or not they will keep you in best stead once we return; virtual meetings will help you identify any emerging threats and concerns and how you might mitigate the risks these pose to your lodge. Moreover, they will allow you to plan how you are going to ensure that your lodge is a fun and vibrant place that your members are going to want to return to once this is all over. Now is the time to act to safeguard your futures.

Don’t worry you are not alone in this endeavour as I, the Provincial Grand Mentor and the team are at hand to assist and there are many resources contained within the



“Members Pathway” that may assist you which can be accessed via <https://b.ugle.org.uk/membership>, as well as a the development of a local toolkit. The Provincial Mentor and I along with your APGMs, are all at hand to facilitate lodge discussions to address concerns / opportunities and help you to form your lodge plan, so please do not hesitate to contact us or better still, invite us to join in on your Zoom meetings.

**Things that you might want to consider as a lodge at this time:**

- Maintaining contact - The use of social media and digital communication platforms. i.e., WhatsApp, TeamApp, Zoom, Facebook etc.
- Setting up/updating a lodge website
- Promotional & marketing materials for your lodge, such as a trifold leaflet, flyers, business cards etc
- Social / celebratory events when lodge meetings resume post suspension
- Lodge finances, governance, and succession planning
- Attraction of new members

Being a firm believer of the old adage “practice what you preach”, following a review of the Provincial Membership Team, alongside a general restructuring I am pleased to announce the following changes within the team. Firstly I would like to welcome the following to the team Brothers Jon Nicholson, Jason Russell, Dan Cooper and Tim Perrin all of whom I am certain will have a positive impact on our work delivered on behalf of the Province. Neil Dale having served as both Group Membership Officer (GMO) and Group Mentor for group 2 and then Deputy Provincial Membership Officer as well as Deputy Provincial Mentor, on the 5<sup>th</sup> of May Neil was honoured by the ProvGM with the appointment to Provincial Grand Mentor. A preferment richly deserved and on behalf of the Provincial Membership Team I extend to him a hearty congratulations!

Neil and I have an established history of working closely together and after much discussion the decision has been taken to further align our work. As such the former mentoring team has been disbanded and mentoring has now been incorporated into the restructured Membership Team, with the aim to provide a more responsive service. This has seen Brothers Ian Mealings, Bryan Wakefield, Roland White and Lee Curtis, join us from the old mentoring team to blend their knowledge and experience with that of the existing officers. The hope is, that this new collaborative approach will provide a more complete “members experience” team to provide a unified service,

and a one stop shop for lodges, to find resources and support that encompasses each and every aspect of the journey through masonry.

I hope you have found this both informative and helpful in providing you with a starting point, in using this down time as constructively as possible, to plan for and safeguard the future of your lodges. Your lodge will soon be contacted by an officer from our team allocated as a liaison between the lodge and this service. Do welcome him, as he is there to support and to ensure that we are able to work alongside you, to achieve your aims and goals as a lodge in making it a success!

### **Your new look Provincial Members Experience Team**

Martin White-Peart - PMO		Neil Dale - Mentor	
Deputies			
Graham Tarran		Andrew Montebello	
Group 1 GMO	Group 2 GMO	Group 3 GMO	Group 4 GMO
Lee Curtis	Mark Taylor	Razak Rumjahn	Robbie McConnachie-Devlin
Group 1 officers	Group 2 officers	Group 3 officers	Group 4 officers
David Hinxman	Andrew Collins	Darren Walker	Tim Perrin
Andy Hanson	Jason Russell	Nigel Knight	Roland White
Paul McBarron	Pat Collins	Dan Cooper	Jon Nicholson
	Ray Armstead	Bryan Wakefield	Ian Mealings

## OUR NEW ACTIVE OFFICERS

### THE PROVINCIAL GRAND MENTOR: NEIL DALE

I would like to take this opportunity to introduce myself as your new Provincial Grand Mentor.

I gained my first West Kent Provincial preferment in 2013 having been appointed to the office of Provincial Grand Steward. Being a Provincial Grand Steward, gave me an opportunity to see how Provincial events are organised and the work that goes into running them. In this role I have assisted in many of the main Provincial events, such as the annual Provincial Grand Lodge meeting and Provincial church service, among others. I later Joined the TLC committee where part of my responsibilities were to deliver TLC bears to Queen Elizabeth Hospital. In 2016 I was promoted to Provincial Senior Grand Deacon, and continued to be part of the escorting team at official Lodge visits. Later that year I was invited to join the Special Events Team, and I organise a few of the Provincial events which included the Christmas pantomimes at the Stag Theatre, and the Raft Race. More recently, I have been involved in both the Provincial Membership and Mentoring Teams becoming lead over Group 2 in both areas and subsequently deputising for both the Provincial Grand Mentor and Membership Officer over the past year. In my year as deputy I had a hands on role with supporting the rolling out of the Members Pathway, and in representing mentoring with a focus on retention in presentations across the Province.



I was delighted to be offered the role of Provincial Grand Mentor and would like to embed the steps given in the guidance from UGLE in the Members' Pathway throughout our Province. It is a tried and tested system that can assist in growing a strong and robust lodge for the future for all. I am sure we can build resilient groups that not only meet 5 times a year, but socialise, and enjoy not only each other's company but that of our friends and families. This will build closer bonds between members and encourage new members.

During these current troubled times I would like to encourage all of us to be mindful of communication within our units, to promote joining up in a "Zoom" meeting or using "WhatsApp" groups and also let us not forget those members who might not be able to use these channels, a phone call goes a long way.

As a final note I would like to encourage every member to sign up, and have a look at Solomon (<https://solomon.ugle.org.uk/>). It is a fantastic source of information whether you are seeking material for yourself or to share and encourage others. Let us all take this opportunity of down time to continue our daily advancement of masonic knowledge.

---

## **THE PROVINCIAL GRAND DIRECTOR OF CEREMONIES: DANIEL UNTHANK**



I was initiated into Oxleas Wood Lodge in April 1995. My father conducted the ceremony, along with my grandfather and uncles who all carried out separate parts of my initiation. I became Worshipful Master in January 2003 but missed most of my year due to being mobilised for active service in Iraq. I am a member of North Kent Chapter and am working my way through the various offices, slowly, but surely.

As Provincial Grand Director of Ceremonies, I, along with the Deputy and Assistant Provincial Grand Directors of Ceremonies, advise on all aspects of Ceremonial activity within the Province. The team and I ensure that all Ceremonial is carried out conscientiously and with decorum. We also escort the Provincial

Grand Master, his Deputy and Assistants when official visits are made to lodges. This involves working with the Lodge Secretary and Director of Ceremonies to make sure that such special occasions run smoothly and enrich a lodge's meeting. An important part of my role is to assist any Lodge Director of Ceremonies should they require any advice or help with Ceremonial details, something that I am always happy to provide.

I am a proud husband and father of two sons, the eldest of which has just started his Masonic journey by joining his father and grandfather as a member of Oxleas Wood Lodge. When not working or attending Masonic meetings, I enjoy keeping fit and target shooting. I am also an instructor with the Combined Cadet Forces, working

closely with young people to provide them with opportunities to challenge themselves, develop skills, and work as part of a team.

Masonry is an important and highly enjoyable part of my life. I am immensely proud and honoured to be the Provincial Grand Director of Ceremonies and look forward to visiting as many lodges, and meeting as many brethren as possible during my tenure.

---

## **THE PROVINCIAL GRAND CHAPLAIN: ROBERT JONES**

I was initiated into Faraday Lodge No 4798, a London Lodge, in April 1989, and was elected as its Master just four years later. From that you might gather that I became then and still continue to be a very enthusiastic Freemason. My engagement with Craft Freemasonry in West Kent began somewhat later, in 2005, when I had the honour of being the founding Treasurer of the Alma Lodge No 9792. Since then I have become more active in the Province as a Joining Member of a Chapter and a Lodge, and more recently as a founder of a new Chapter too. My Masonic commitments increased pretty much exponentially when I took early retirement after forty-two years as an undergraduate student and subsequently a member of staff at Queen Mary, University of London. Over time I have joined and remain active in other Masonic Orders in London, West Kent and beyond, and I am currently a subscribing member of twenty-five units spread over ten Masonic Orders. Beyond the Craft, I have been heavily involved with the Ancient and Accepted Rite - the "Rose Croix" - for getting on for thirty years, for the last ten of which I have been District Recorder (roughly the equivalent of a Provincial Grand Secretary, but far more provincial and far less grand!) for West Kent.



I was delighted to receive a letter from the Provincial Grand Master in December last year, offering promotion to the rank of Provincial Grand Chaplain. I had some previous experience of the duties of Provincial Chaplaincy, having been appointed as the Deputy Provincial Grand Chaplain in 2013 and serving for two years in that role.

The duties of the Chaplain are primarily to read the opening, closing and valedictory prayers at the annual meetings of the Provincial Grand Lodge, to write and deliver

orations (which are effectively mini-sermons) at Consecrations and Banner Dedications, and to assist the Executive on the hopefully infrequent but very sad occasions when lodges cease to meet and formally surrender their warrants. You may have noticed that I wrote "to read ... prayers". I am a firm believer that prayers should with very few exceptions be read and not recited from memory, on the grounds that the Grand Chaplain of the United Grand Lodge of England, the Pope and the Archbishop of Canterbury all read prayers, and who am I to set myself above them?

---

## THE PROVINCIAL GRAND REGISTRAR:

### BINOY KARIA



Binoy is a qualified solicitor and worked in a leading global law firm as a banking and finance lawyer for several years in London and Tokyo before moving in-house to a large international bank, where he held senior roles in London, the Falkland Islands and New York. Binoy left banking in 2017 to focus on his entrepreneurial interests in real estate, hospitality and technology and lives in Chislehurst with his wife, Purvi, and two children, ages 9 and 7.

He has a keen interest in sport - more recently as a spectator and also, gastronomy, and is often planning his next restaurant booking!

Binoy has a long family history in Freemasonry. His father, W. Bro. Babu Karia, was initiated into New Ripon Falls Lodge No. 8833 in 1980 which meant that he was introduced to the Craft from a young age. Joining the Craft was a fairly natural step for him as a result. His brother, Niloy, was initiated into Mountsfield Lodge No. 6548 in 1997 and Binoy followed soon after, being initiated in 1998. He was installed, by his brother (in both the masonic and fraternal sense) as Master of Mountsfield Lodge in 2006 and has served as Secretary of Mountsfield Lodge since 2014.

He is also a member of West Kent Masters' Lodge 5778, West Kent Provincial Grand Stewards' Lodge 8565, Hervey & Kentish Companions Lodge 1692 and Lord Harris Lodges of Mark and RAM. Binoy was exalted into Manor of Estham Chapter 5346, is a member of Pillars of Kent Chapter 9012 and a founder of Hervey Chapter 1692.

In 2009, Binoy was appointed a Provincial Grand Steward and later promoted to Past Provincial Junior Grand Deacon. This year, Binoy was appointed Provincial Grand Registrar and awarded Grand Rank as Past Assistant Grand Standard Bearer.



It has been a busy start in his new Provincial role. In addition to some administrative matters, Binoy is actively involved in the West Kent Emergency Fund, which continues to provide invaluable support to worthwhile community projects in response to the COVID-19 pandemic, as well as members who are in need of support during this very difficult period. He is looking forward to serving the Province in this capacity.

---

## **PROVINCIAL GRAND CHARITY STEWARD: PETER BROOKER**

If at my last Masonic meeting in February, someone had said to me that within a few weeks all Masonic meetings would be suspended, every pub and restaurant in the UK would be closed and all airlines grounded, I would probably have thought you were somewhat delusional!

From the middle of March this year and since that time our lives have been dominated by one wretched subject, the effects of which will stay with us into the future.

The past few months have been an awful struggle for so many individuals suffering physical and mental illness and financial hardship. Huge numbers of charities suddenly found themselves facing enormous financial issues, as fundraising efforts became impossible and income from Charity Shops etc literally ceased overnight. Notwithstanding these problems, demand for the vital services provided by charities, immediately increased to an all-time high.

However, what I find so remarkable is our ability to overcome such adversity, adapt to new ways of living and with great determination, refuse to be beaten. We have simply carried on with life the best we can and responded to the challenge of assisting all those who need our help.

If you take part in social media or read the last issue of this magazine, you will be well aware of the important work carried out by the Board of the West Kent Emergency Fund, to support a large number of local charities, local organisations and individual



members. In this issue of the magazine, you will see additional information about charity work implemented within West Kent and also some of the work carried out nationally by the Masonic Charitable Foundation.

Like so many others, I was particularly disappointed not to be able to attend our Provincial Grand Lodge meeting this year and I am desperately keen to, once again, enjoy the company of my friends at a masonic meeting. However, even though we are not able to meet in person, we have been able to keep in touch with each other and use innovative ways to continue enjoying freemasonry, the best we can.

Freemasonry has a great many facets and our desire to support charity is simply one of these. Over the last few months, Freemasonry has 'stepped up' and played a vital role in supporting charities, vulnerable individuals and those facing extreme difficulties in all aspects of life.

Our endeavours to help all those who need us will never fade and this is truly a proud time to be a freemason.

**MCF - West Kent, 16 projects have been awarded a total of £19,000 to help your local community through the pandemic.**

Jun 9, 2020 | [News Briefing](#)



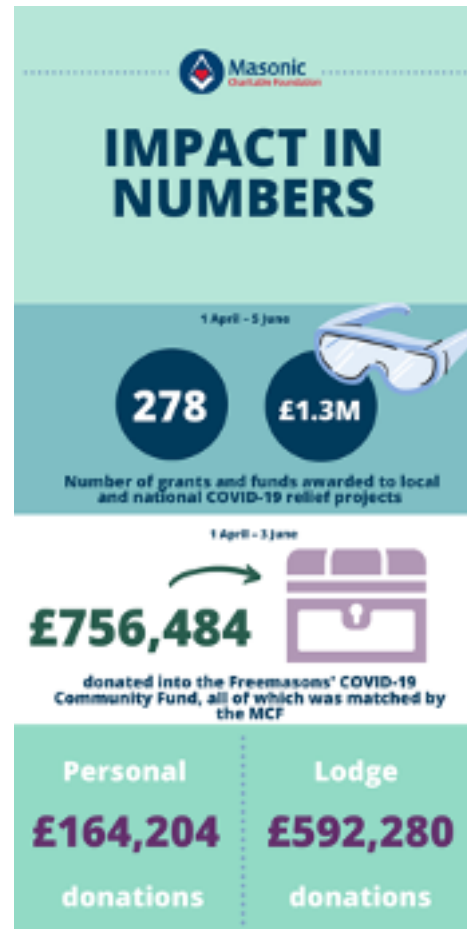
### **Supporting your local community through COVID-19**

#### **Freemasonry has stepped up to support local charities and projects 🦹**

From 1 April - 5 June, Freemasonry together with the MCF, supported **278** local charities and projects dedicated to helping people through the coronavirus pandemic, at a total cost of **£1,345,908**.

📍 In **West Kent**, **16** projects have been awarded a total of **£19,000** to help your local community through the pandemic.

🌐 **Stay updated with Freemasonry's impact!** Visit our website and check out our [interactive map](#).




### Support for Freemasons and families

The MCF is still here to support Freemasons and their families who are facing a difficult time in their lives – whether related to COVID-19 or not.

From 1 April – 31 May, **940** people were supported totalling **£1,890,504**.

**Do you need help? Get in touch with us to see if we can support you:**

 [help@mcf.org.uk](mailto:help@mcf.org.uk)

 0800 035 60 90

### Where is your money going?

Between 1 April – 3 June, Freemasons and their families generously donated **£756,484** into the Freemasons' COVID-19 Community Fund! **But what will the money be used for?**

We know that although life will eventually get back to 'normal', for many people the effects of COVID-19 will be felt for months, if not years, to come. Whether that's job security, housing worries, health issues or coping with bereavement – there will be people in every community that will continue to need support.

**17 This fund is there to support disadvantaged and vulnerable people for the foreseeable future.** By funding large-scale projects and initiatives, Freemasonry will continue to have a positive and lasting impact on those who need us most.



### How's your mental health? 🧠

Last week, we announced a [£250,000 grant](#) to mental health charity, Mind, to help them meet the needs of over a million people who turned to them for support, as a result of social distancing. Read more about how Freemasonry is supporting Mind, [here](#).



**Are you struggling with your mental health?** Get in touch with our Enquiries team to access our free, confidential counselling service:

✉ [help@mcf.org.uk](mailto:help@mcf.org.uk)

☎ 0800 035 60 90

### Make a difference 🙌

If you would like to help make a difference to your local community, why not make a donation to the Freemasons' COVID-19 Community Fund?

**The MCF is matching all donations up to £1 million**, to help Freemasonry make a lasting difference.

[Donate today](#)





## WEST KENT EMERGENCY FUND



### WEST KENT 'MIND'

West Kent 'Mind' has been significantly impacted by the COVID virus situation.

Income from multitude fundraising events has been completely lost and yet more than ever local people desperately need access to mental health support services

The West Kent Emergency Fund board working in conjunction with the Masonic Charitable Foundation has donated to enable 'Mind' to continue the outstanding work they do in our local

communities.

*Making a difference throughout West Kent.*

### WEST KENT 'digs in' to help SPADEWORK



The charity Spadework has a serious financial shortfall as income and fundraising has ceased. Since the outbreak of Covid-19, Spadework has been supplying over 100 free food parcels, veg boxes and fruit baskets every day to vulnerable adults living in the



community. Money is needed to continue this work and to carry out the usual services provided by Spadework to care, support and give meaningful opportunities to adults with learning and other disabilities.

I am pleased to inform you the West Kent Emergency Fund board, working with the Masonic Charitable Foundation, has donated to enable 'Spadework' to continue providing these vital services.



## WE ARE 'BEAMS'

Following a donation in May, the Province receives a letter, expressing gratitude and outlining the benefits that will be gained from the funds.



17<sup>th</sup> June 2020



Mr Peter Brooker  
Masonic Province of West Kent  
Provincial Grand Charity Steward  
Sent by e-mail

Dear Peter

**Re: Thank you for your donation**

I am writing to thank you for your donation of £1000 we received towards Beams' COVID-19 appeal. We are grateful for your support. I would also like to thank you for recommending Beams for the additional £1000 match funding that we also received direct to the bank this week.

The money will be used to pay towards the re-opening of our Dragon's Retreat Respite Unit where we are currently offering overnight care for 48- hour periods with additional safeguarding in place to protect both the children and the staff. I will come back to you again soon with an update of our progress during this period and how many children/families we have helped.

**About Beams**

We are Beams is a local charity that supports disabled children and their families.

The disabled children and young people who access our services will typically have one or multiple learning difficulties, complex health needs, physical or sensory impairment, challenging behaviour, Autism or severe ADHD.

Our work is divided up into four key areas, these are; Short Breaks Services, Family Advice Service, Direct Payment Service and Dragon's Retreat Short Break Unit.

We need to raise £1.8 million in order to continue our care services to the most vulnerable in society. At any one time, we support 450 families.

Our funding comes through grants, donations, charitable giving and a supporting community/business sector working alongside Kent County Council Social Services.

Yours sincerely

**Caroline Brinkman**  
Income Generation and Development Lead  
[Caroline.brinkman@wearebeams.org.uk](mailto:Caroline.brinkman@wearebeams.org.uk)



We Are Beams Ltd | Registered Company in England & Wales No. 3079785 | Registered Charity No. 1054129

Allsworth Court  
40 St David's Road, Hextable, Kent, BR8 7RJ  
01322 668501  
[admin@wearebeams.co.uk](mailto:admin@wearebeams.co.uk)  
[www.wearebeams.org.uk](http://www.wearebeams.org.uk)



ellenor  
Coldharbour Road  
Gravesend  
Kent  
DA11 7HQ

Mr P. Sawyer

Our ref:56050

29 May 2020

Dear Mr Sawyer,

On behalf of everyone at ellenor, I would like to sincerely thank the Provincial Grand Lodge of West Kent for your generosity. The recent donation of £2000 from your West Kent Emergency Fund combined with the £2000 which was matched by The Masonic Charitable Foundation is so gratefully received. We were also so thankful for the four Samsung Tablets which were donated to us. These will be an invaluable, additional and much needed tool to keep our patients and families in touch during these uncertain and challenging times. Please know how grateful we are for your support during this time.

Your donation will help us to ensure that we can continue providing hospice care to local families facing terminal illness. Our vision is for all families facing terminal illness to receive the best quality, personalised care and support. This still stands and we hope we can continue to be there for those who need us, thanks to the generosity of people like you.

On behalf of our families, thank you for your support and for being part of ellenor.

Yours sincerely



Jemma Kemp  
Interim Corporate & Community Fundraising Manager  
[Jemma.kemp@ellenor.org](mailto:Jemma.kemp@ellenor.org)  
07787 255 222

T: 01474 320007 [www.ellenor.org](http://www.ellenor.org) [info@ellenor.org](mailto:info@ellenor.org)  [@ellenorcharity](https://twitter.com/ellenorcharity)  [/ellenorcharity](https://facebook.com/ellenorcharity)

ellenor is a charity registered in England and Wales (1821561), and a company limited by guarantee (6302132). Registered office at Coldharbour Road, Gravesend, Kent, DA11 7HQ



Giving kids with limited life unlimited possibilities

Mr M Estaugh  
Provincial Grand Lodge of West Kent  
Oakley House  
Bromley Common  
Bromley  
Kent  
BR2 8HA



16 June 2020

Receipt No. 2020/212

Dear Mark

Thank you. Provincial Grand Lodge of West Kent's generous donation of £1000 will mean the world to the children we work with at ellenor and Demelza South East London. Please accept this letter as a receipt of your kind support.

At Lifelites, the donations we receive go to work straight away helping children with rare, life-limiting conditions and complex disabilities. Your donation will help us to provide these children with leading technology and equipment that encourages them to communicate, be creative and – most importantly – control elements of their lives that they might otherwise be unable to. Some of these children cannot do simple things that we take for granted, such as saying: "I love you" to their mum. The equipment we provide – thanks to you – has the power to change that.

Without your ongoing support, we would be unable to spread our magic and transform the short lives of these children. Therefore we have great pleasure in enclosing a Lifelites 2020-21 Supporter Award for you to display.

We will publish the trust name on the supporters' page of our website unless you would prefer us not to. We believe we have a responsibility to keep you up to date with how we use every gift, so we hope you won't mind if we add you to our mailing list. Please let us know if you would prefer not to be included in this list.

Thank you again for your kind support.

Simone Enefer-Doy  
Chief Executive

#### Become a Lifelites Champion

Individual Gift	£50
Donor	£500
Supporter	£1,000
Sponsor	£5,000
Principal Sponsor	£10,000

[www.lifelites.org](http://www.lifelites.org)  
Charity No 1165791

26 Great Queen Street, London WC2B 5BL  
Patrons

[info@lifelites.org](mailto:info@lifelites.org)  
Tel: 0207 440 4200

Lady Pamela Kalms MSE  
Dame Esther Rantzen CBE

The Baroness Finlay of Llandaff  
Peter Bowles Anita Dobson

The Rt Hon the Earl Cadogan DL  
The Rt Hon Lord Young of Grafton DL

Rick Wakeman  
Joe Pasquale



## TUNBRIDGE WELLS MASONIC CENTRE and NOURISH FOODBANK

A donation of £4295.00 was presented to Dawn Stanford, Operations Manager of Nourish Community Foodbank by Roger Mallett, representing the West Kent Masons who meet at the Tunbridge Wells Masonic Centre, St John's Road.

Nourish works closely with the NHS, Social Services, domestic abuse charities and the local Police from whom they receive referrals to ensure Food Parcels only go to genuinely needy families.

Nourish Community Foodbank has just been accorded the "Queens Award" for Voluntary Services, one of only 230 charities in the UK to be awarded this "MBE for charity" accolade in 2020.

Dawn Stanford said, "We are so overwhelmed with this incredible donation from the West Kent Masons. Nourish Community Foodbank has seen a huge increase in demand for our services from people in crisis across the whole Borough of Tunbridge Wells as well as South Tonbridge. Since the COVID-19 pandemic struck, we have seen up to a 200% increase in weekly referrals and we are now delivering on average 200+ food bags a week. Due to the lockdown we have lost the vast majority of our usual food and financial collection donation points - schools, churches, associations and businesses and so we are in a position where we are having to buy food in addition to our usual costs. Thank you - we truly couldn't do what we do without the support of people like you."

The Masonic contribution will make a real difference to the numbers they are able to support within our local area. Many thanks to Duncan Annells, for this contribution.



## HOSPICE IN THE WEALD



The Hospice in the Weald have expressed their thanks to Holmesdale Lodge, for the donation of ten Samsung tablets on behalf of our Province on their website. <https://www.hospiceintheweald.org.uk/news/article/patients-stay-connected-with-donated-tablets>.





## LEARNING AND DEVELOPMENT DURING COVID-19: TONY HARVEY

An important part of the Provincial Grand Master's / Grand Superintendent's strategy for the Province, is to encourage all brethren to develop their understanding of Freemasonry and the skills needed for various offices. He has appointed me as Head of Learning & Development and I have put together the following team.

### Provincial Education Officer – Alan Wondzinski

Alan's role is to promote a daily advancement in masonic knowledge and understanding. He is putting together a team of speakers who can deliver either their own talks or those from Solomon, UGLE's repository of learning materials, and is keen to work with other groups, such as the Light Blues Club and Installed Masters' Lodges, to promote learning.

### Provincial Training Officer – Steve Archbold

Steve is working with other Provincial Officers to identify training needs and develop training workshops for Lodge Officers. He will also be recruiting and managing a team of trainers to deliver the workshops.

### Provincial L&D Administrator – Richard Savage

Richard works in support of me and the others, to make sure the administration and organisation of events work as simply, and smoothly as possible, leaving others to concentrate on delivery.

### Provincial Grand Orator – Clive Moore

Clive Moore leads a team of Orators who have developed, and present their own talks in Lodges and works closely with Alan to ensure a joined-up approach to serve Lodges.

During the suspension of Masonic meetings, we cannot deliver talks in your Lodges & Chapters but we do encourage you to use this time to increase your understanding of Freemasonry. Alan has been running a regular "Thought for the Day" on the



Provincial Facebook Group. UGLE has been increasing the content on Solomon (and indeed it will soon feature recorded Prestonian Lectures). Many Lodges / Chapters have been holding online video meetings, using for example, Zoom, and this medium is increasingly used for the purposes of Masonic education.

If you are seeking opportunities to learn in your own time, I would encourage you to register as a user of Solomon at <https://solomon.ugle.org.uk>, and then "enrol" to access different categories of material. Solomon includes content for those interested in becoming a Freemason, some for each of the Craft degrees and the Royal Arch, and other matters, relevant to the running of Lodges. If you have not yet seen the material, it is superb. It ranges from short pieces that take 5-minutes to read ("nuggets") up to full papers and demonstrations, for those who seek them.

We will be very happy to support your online Lodge or Chapter meetings, and can offer speakers who can join you to present talks and lead Q&A sessions. These will become even more important as many of our members are unlikely to return to face-to-face meetings when they first restart. To seek a speaker, please contact the team on [WKLandD@gmail.com](mailto:WKLandD@gmail.com) and Alan or Clive will get back to you to make arrangements.

We expect there will be new training needs that arise as we plan our exit from suspension and as Lodges work to resume their regular meetings. We, and Steve in particular, will be working with other Provincial Officers to provide the support that is needed.

---

## **2026 FESTIVAL CHAIRMAN: ROLAND STOKES**

Who would have predicted when we were enjoying our November and December Masonic meetings, spending time with our friends and families at Christmas, and having fun at the Pantomime, that we would still be enduring a three month lockdown in June 2020!

But we are where we are, and this last three months has shown how vitally important the Masonic Charitable Foundation (MCF) is to West Kent and the Nation as a whole. It emphasises the significance of continuing to support the 2026 Festival over the remaining 71 months. I thank those members who have set up Direct Debit donations to the Festival, which has proved to be exceptionally important with no Lodge/Chapter



meetings for the foreseeable future and I encourage others to follow this example. Just visit <https://westkent2026.festivalappeal.org/>

As you will be aware the 2026 Festival fund raising events have all been cancelled, however we will continue with the "Prize Draw" which would have taken place at the Raft Race event. All Charity Stewards have been sent 6 books of Draw Tickets for distribution and details of how we will conduct the Draw will be available soon.

In the meantime, on Sunday 21<sup>st</sup> June in the absence of the London to Brighton bike ride one of our Brothers, Ron Salter, a keen cyclist, decided to imitate the race in his garden. He asked for sponsors and cycled 100 miles (not the usual mere 54) and raised £1500 for the COVID-19 Community Fund. Added interest, was a live Facebook feed to watch his progress. We also understand 300 members tuned in at some point during this event! The support you gave Ron is very much appreciated

If any other members of the Province would consider arranging a similar fund-raising event please feel free to contact me or any of the Festival team. We would be pleased to assist.

I have no doubt there will be other articles in this West Kent News, with facts and figures about funds granted from the MCF, so I need not repeat those here. But, may I point out, that any donations direct to the Grand Charity go into the MCF pot, and not to our 2026 West Kent Festival Relief Chest.

The 2026 Festival Team are working behind the scenes in anticipation of the resumption of our meetings whenever the Grand Rulers decide it is feasible. Finally, remember you can always text a donation to 70500 "WESTKENT"

I am available to help or advise at anytime, as are my team.



*"Ron Salter undertaking his ride for charity. Congratulations on your effort Ron!!"*

**MEMBERS' WELFARE and THE PASTORAL CARE TEAM:****PHILIP MAY**

The Pastoral Care Team was formed in May 2019 with a view to expanding the very successful initiative of PSA testing for Prostate cancer in the Province. Since December 2016, the PSA Team has carried out over 2,000 tests, resulting in the discovery of over thirty cancers and numerous other urological issues in members of the Province, their families and close friends. The aim, was to expand activities relating to health and wellbeing for the benefit of the members of the Province of West Kent.

After just a few weeks, it became apparent that this is a huge subject and we would struggle to achieve any meaningful results on our own, so we had numerous meetings with

existing organisations to explore the possibilities of working with them, to bring a whole range of initiatives and services to our members and their families.

Our first contact was with our very own MCF, the Masonic Charitable Foundation, for whom we have just launched our 2026 Festival. The MCF has a comprehensive list of services which are already available to our members, their families and dependents. However, we found that the membership are not necessarily fully aware of what they are, or how to access them.

Initially set up to provide information on Prostate cancer and PSA testing, we launched our poster campaign in all Centre washrooms in November 2019. Immediately after the PSA testing session on 7th March the original posters were replaced with a range of posters developed in conjunction with the MCF, to highlight topics included in the MCF publication 'Better Lives' - Wellbeing in the Community, Who Cares for the Carer, The Truth about Dementia, and so on. We shall be monitoring the success of this project and hope that a lead will be offered by the MCF to London and the Provinces.

In December 2019, we ran a 'pilot' scheme at Welling to offer NHS Health Checks to twenty-two volunteers, including the Provincial Grand Master. This proved so successful, that we will certainly be offering them again at future events.

Despite a late change in operating arrangements by the Graham Fulford Charitable Trust, the charity we use to support the PSA testing process and distribute the results, we tested over 300 at the session on 7th March at Bromley. Sincere thanks to Heather and Martin for allowing us to hold the event at Oakley House, to Colin Wright and George Buckberry for their sterling work, in ensuring that all those who had booked on the original manual system were directed to register and re-book on the new on-line system, to all of the team who made the event run so smoothly including our great team of phlebotomists and the motorcyclists, who delivered the samples to the laboratory in London.

After the initial work with the MCF, the Graham Fulford Charitable Trust and the NHS, we turned our attention to Mental Health and have had a meeting with 'Mind' to discover how we might work with them to bring the services they provide to our members. Likewise, we have a meeting arranged with Age UK, to discuss working together to bring the many benefits they have on offer.

Having spent considerable time discussing how we might make a real difference to the health and wellbeing of our members, it has become apparent that by entering into partnership with organisations with specialist skills and experience in their field, we will be able to accelerate process of bringing help and advice to our members and their families.

During normal times, one in four people is affected by some sort of mental health issue, but these are not normal times and Freemasons are not excluded. If you have a problem, any problem, we may be able to help.

The Pastoral Care Team have established a 24/7 **local rate** Care Line, which West Kent Masons can use to call a fellow West Kent Mason member to talk to in strictest confidence. The Care Line team will offer a friendly, helpful, listening ear and to provide contact details to other support agencies where needed.



The team comprises six well respected and experienced Freemasons and you can choose which one you speak to by selecting their unique number:

**Careline Number 0203 404 0423**

<b>Nigel Wooldridge</b>	<b>Press 1</b>
<b>Fred Halligan</b>	<b>Press 2</b>
<b>Colin Wright</b>	<b>Press 3</b>
<b>Phil Grigg</b>	<b>Press 4</b>
<b>George Buckberry</b>	<b>Press 5</b>
<b>David Hedges</b>	<b>Press 6</b>
<b>Voicemail</b>	<b>Press 7</b>
<b>Hear options again</b>	<b>Press 8</b>

In the unlikely event that all of the team are busy, the caller will be able to leave a voice message and the system will automatically send an email to all six team members who will return your call as quickly as possible.

**0203 404 0423**

One year on and we are already making a difference, please help us to help you, by supporting our initiatives. We all continue to be seriously affected by the Corona pandemic, which has affected so many of our members and their families and has significantly changed our lives. If you have any issues arising from the strict controls on movement, isolating or distancing then please do not try to deal with it alone. You could consider contacting your Lodge Almoner, the MCF on 0800 0356090 or call the new West Kent Careline on 0203 404 0423.

Keep safe and keep well.

**Five easy ways  
to increase movement,  
improve muscle power and  
keep active without noticing!**



**1.Easy ways to increase your exercise levels:**

If you have 2 toilets in your home on different floors, use the one that is on the other floor to the floor you are currently on.

Carry less things from one room to another so you have to make multiple trips (seriously, what else do you have to do?).

**1.An easy way to use core muscles and improve balance control:**

Stand up from your seat without using your hands to push yourself up (do this every time you stand).

**1.An easy way to increase full body movement:**

Make large exaggerated movements when performing daily tasks (pretend you are an actor in a B-movie and over-act your movements). (It may be silly but it's very effective.)

**1.An easy way to strengthen legs, hips and knees:**

Walk up and down stairs very slowly – this improves muscle resistance movements which works muscles harder.

**1.An easy way to improve your coordination and balance:**

Spend time standing on one leg or try putting socks on whilst standing. (Better balance has been linked to good brain function and cognitive ability.)

**Important to note when exercising:**

If it hurts – STOP.

If it causes pain after you have used it – seek professional advice.

If you fear for your safety – Don't even attempt it.

**Information provided by Shelley James M.Ost, MRSPH**

## BAND OF BROTHERS



Members of BoB (Band of Brothers), delivering 2 chairs to Prince George Duke of Kent Court on behalf of the members Radiant Star lodge 8967 thanks for the donation Guys I'm Sure they will be put to good use.



*By Steve Demwell, Radiant Star Lodge*



The Band of Brothers raised £2,760 for Prince George Duke of Kent Court, along with Arbor Lodge. Congratulations on a fantastic achievement

## ROOKESLEY LODGE

I am pleased to say that from our limited resources we have so far donated £400 to the local food banks in Bexley and Sidcup to support their efforts and a further £200 to the League of Friends at Sidcup Hospital for their support of the heroes that are working through the pandemic.

In part this was assisted by a Brother who was working from home and donated his travel savings to the Lodge.

As Almoner I am also thankful for the support of Phil May and his team in resolving issues relating to a member who was diagnosed with cancer just before lockdown and whose hospital support was, sadly, unavailable.

*By David Hedges, Secretary and Almoner*

---

## SHIRLEY WOOLMER LODGE

With the current crisis, a number of our regular fundraising events in the Province have been cancelled. This has caused a hefty impact on Prince George Duke of Kent Court, who will be £5,000 out of pocket this year from the Summer and Christmas fetes.

But for the good fortune of our Zoom meeting, Shirley Woolmer Lodge 2530, proposed that we should help out in these unprecedented times with a donation of £2,000. I circulated via email to our members who were all in agreement, so, on Tuesday 16<sup>th</sup> June, Martin Reeve represented the lodge and presented our donation to Peter Prior, from the Association of Friends.

*By Mike Chivers*



## PRUDENCE AND CONCORD LODGE

W Bro Stephen Carter PPrJGD LGR, endured a long battle against a disease that sadly he lost in 2019. When Steve was initially diagnosed with cancer some 5 years ago, he, with his family and friends held a summer party that raised £1000 which was given to Medway hospital for the staff and patients in the Galton and Lawrence wards.

Steve loved his masonry and all that the organisation stood for and it was his wish that a further donation should be passed to the wards, in Steve's name, via his lodge.

Following the loss of Steve, he had left instructions that at his "celebration of his life" which was held on the 18<sup>th</sup> October 2019, at Thames View and then afterwards at his local village hall at High Halstow, that he did not wish for any flowers, but that all collections would go to the MacMillan nurses and the above wards and I quote:

"A thank you for fighting my battle with me and believing in me. I am eternally grateful, with upmost respect for Galton/Lawrence wards in the way they supported and treated me – Stephen.

The event attended by family and friends, went fantastically well and raised £940, of which £280 was sent to MacMillan Nurses and a cheque for £660 was presented to the Medway CEO James Devine on Tuesday 18<sup>th</sup> February by Maureen Carter.

Maureen was accompanied by her two daughters and three of her grandchildren along with the charity steward from Prudence and Concord Lodge.

Following the presentation where the family met a number of nurses who cared for Steve, we were shown around the hospital, focussing on the gardens and decorations in certain areas that are only made possibly through charitable donations, by various groups and individuals including masonic lodges and freemasons. These important changes help to make the hospital, a nicer, more conducive environment for the

treatment and recovery of the patients, who can spend many hours if not days in treatment rooms, which would otherwise be a "beige room".



Photo shows Maureen presenting cheque to James Devine (CEO Medway Hospital), along with her family, nurses and the charity steward from Prudence and Concord Lodge, Phil Moore.

*By Phil Moore*

## WEST KENT LIGHT BLUES CLUB

### THE CHAIRMAN: MARK JAMES



I was born in 1972 and raised in Carlisle, Cumbria. From an early age I enjoyed wild fowling on the Solway firth with my father, spending many a cold windy evening waiting in cover for geese and ducks to appear. This led to army cadets from age thirteen to sixteen. I thoroughly enjoyed my time in the cadet force especially competing in regional rifle shooting competitions, which naturally in 1988 led on to the Junior

Leaders Regiment, Royal Engineers. After a hectic year training in Dover, I completed further training in Camberley then posted to Osnabrucke Germany.

My first year was spent mostly upgrading security on various army camps, an excellent opportunity to see lots of Germany. Towards the end of 1990-91 I served in Northern Ireland, spending time in Belfast, Lisburn and Ballykinler. After Northern Ireland, I was posted back to Chatham for trade training as a blacksmith welder, it was at this time I started courting my eventual wife Shelley. I was then posted again to Germany, this time to Nienburg. After a busy year, I served in Bosnia spending 6 months road building, drilling and blasting mountain tracks mostly to support UN aid operations. I also managed to squeeze in my wedding, during a two week rest and recuperation break too!

After Bosnia, my wife joined me in Nienburg for a summer before we returned to a UK posting in Maidstone. Further trade training followed in Chatham (whilst based in Maidstone) and a second tour in the Balkans, this time in Croatia. I then decided to leave the army in 1997 and we settled in Maidstone.

I worked for a short time as an engineer at the steel mill in Sheerness before moving into the liquid waste management industry. I eventually worked my way into a management position, eventually running eleven depots across the South East for a Southern Water contract. When this contract finished, I then took the plunge and started my own liquid waste tanker company in 2012. This has been successfully trading since then. I would highly recommend the challenge of working for yourself.



In late 2013 a family friend who knew of my drainage business asked me to look at the drains on the Shirley Woolmer Masonic centre. A problem was identified and resolved, and I then expressed an interest in the Craft, joining in 2014. After five years I became master of my mother lodge (Lamorbey 5614). I am also senior warden in another craft lodge, third principal in Lamorbey chapter, and a member of Mark, RAM and recently Rose Croix.

I joined the West Kent Light Blues club at it's first inaugural meeting at the Warren, Bromley, attending the early events and breakfasts. Two years later, the opportunity arose to become Chairman and I was elected. The club has undergone significant changes during my tenure as Chairman, including membership registration, introduction of centre and lodge representatives and an expanded committee to assist with our membership needs. We also have held many events, participated in the usual Provincial events and last year attended the New Young Masons Club conference in Leicester.

### **THE CLUB'S ACTIVITIES**

The West Kent Light Blues Club, continued to build on the previous year's work, further strengthening its delivery for its Members, but it still has much to do, to achieve all of its aims and objectives. Our membership has moved forward to 325, with more to do to reach the strategic target of 500.

The year began successfully, with the Club starting a new initiative, holding monthly Lodge of Instruction at Prince George Duke of Kent Court, in Chislehurst. Club Members held the very first one themselves, in January 2019. Thereafter, a lodge from around the Province volunteered to hold one of their lodges of instruction at the home on the first Monday of each month, in turn. This was an excellent way for the residents to engage in an important aspect of their lives, that had been missing as residents. This activity, visibly lifted the spirits of many, and it was clear they thoroughly enjoyed delivering their favourite pieces of ritual. Given the decades of Masonic experience between them, it was wonderful to draw on their wealth of understanding too. Unfortunately, as the end of the year drew near, the frailty of a number got the better of them and the Club discontinued the activity. We extend our gratitude to the staff at Prince George Duke of Kent Court, for assisting us in achieving this important goal.

The Club's breakfast gatherings have had continued success, growing in popularity as time progressed. They were held in Bexley and Welling, and more recently in Sevenoaks. Serving all parts of our Province, remains a work in progress, particularly, Wrotham and Tunbridge Wells area.



Evening drinks at the end of the month, every two months, started off in relatively low numbers, but recently, demonstrated to be a resounding success, especially, in the Sidcup area.

Ten pin bowling was a success in Bexleyheath. Partners were pleased to take part and enjoy the casual environment and the friendly rivalry between families and friends. A Clay Pigeon shooting event in July was enjoyed by the Club, organised by the West Kent Shooting Club. Family members also took part in this event, which lead to further interest in the sport, with the Lodge of Sincerity No 6868, that hosts the shooting club, gaining a joining member.

For the second year, the Chairman's lunch was held at Giacomo's Ristorante Italiano at Sevenoaks, in November. Attendance was exceptional with almost a full restaurant, and the Provincial Grand Master, Mark Douglas Estaugh attended and supported the occasion.

Our flagship event of the year and arguably the most successful, was our Summer Party in July, held at the United Services Club, in Sidcup. Members supported this event in strong numbers with their friends and families, numbering over a hundred in total. The event included a barbeque and disco. A raffle was held to benefit Bromley Scouts, with £550 raised. It is hoped that the Summer Party will feature as an annual event and another is planned for 2021. The Club's President, Mark Eyles-Thomas and Mrs Eyles-Thomas attended and shared the fantastic experience with us.

The Club took part in a number of Provincial events, including the Go Karting at Buckmore Park, and the Raft Race at Greenhithe.

In November, the Light Blues Touring Gavel was launched. The Gavel, in a very short time, has proved to be a great success, in encouraging members to use it as a focal point for visiting Lodges in good numbers. The Gavel was launched at Lamorbey Lodge No 5614, at its Installation meeting, when the Chairman of the Club, was installed into the Chair of King Solomon for the first time.

The Touring Gavel's first outing, was to a Lodge, low on numbers. The number of Light Blues attending the meeting, was able to occupy offices during the meeting, carry out elements of ritual and more importantly, lift the spirits of the Lodge at a difficult time. This is, in part, the essence of what the Club will do more of in the future. Supporting the Light Blues within that Lodge helps them to appreciate that the wider Masonic network does work, and that our fraternity truly is a family, promoting brotherly love.

The Chairman, Treasurer and one of our Representatives, attended the New and Young Masons Clubs (NYMC) Conference on Saturday 28th September, hosted by

the Province of Leicestershire and Rutland. This was an ideal opportunity for Club Representatives to exchange ideas and discuss common concerns.

For the first time in the Club's short life, the committee members were re elected to serve for second year at the Annual General Meeting (AGM), held on 30th March 2019 at Oakley House. This allowed the committee to continue their agenda, delivering for the Members. At the AGM, one of the key matters, was improving governance, surrounding the election of officers and altering the year end date of the Club from 30th March to 30th June.

In order to improve the connectivity between the Members and the committee, the Club has embarked on setting up a network of Representatives, where each lodge will have a nominated Member to fulfil this role. The Representatives will pass information between the committee and the Light Blues within the particular lodge, so that the needs of the Members can be better served.

Our website and social media platforms remain popular with our Members. Latterly, it is possible for prospective members to register for membership via the website.

In summary, the Club's activities have included:

- Lodges of Instruction at Prince George Duke of Kent Court;
- Ten pin bowling, at Bexleyheath;
- Increasing the successful breakfast club;
- Social drinks at local public houses every two months;
- Clay pigeon shooting, under the guidance of West Kent Shooting Club
- Go Karting at Buckmore Park;
- The Provincial Raft Race;
- The Summer Party at the United Services Club, Sidcup;
- The Chairman's Sunday Lunch at Giacomo's Ristorante Italiano in Sevenoaks;
- The launch of the Club's Touring Gavel.

Moving forward, it is necessary for the Club to better engage with its audience and this is a core objective of the Club, to continue to achieve, as well as reaching the target membership of 500.



A Light Blues Club visit to Hervey Lodge, Sidcup, in January 2020.



### THE FUTURE OF FREEMASONRY 'EVOLUTION AND CHANGE'

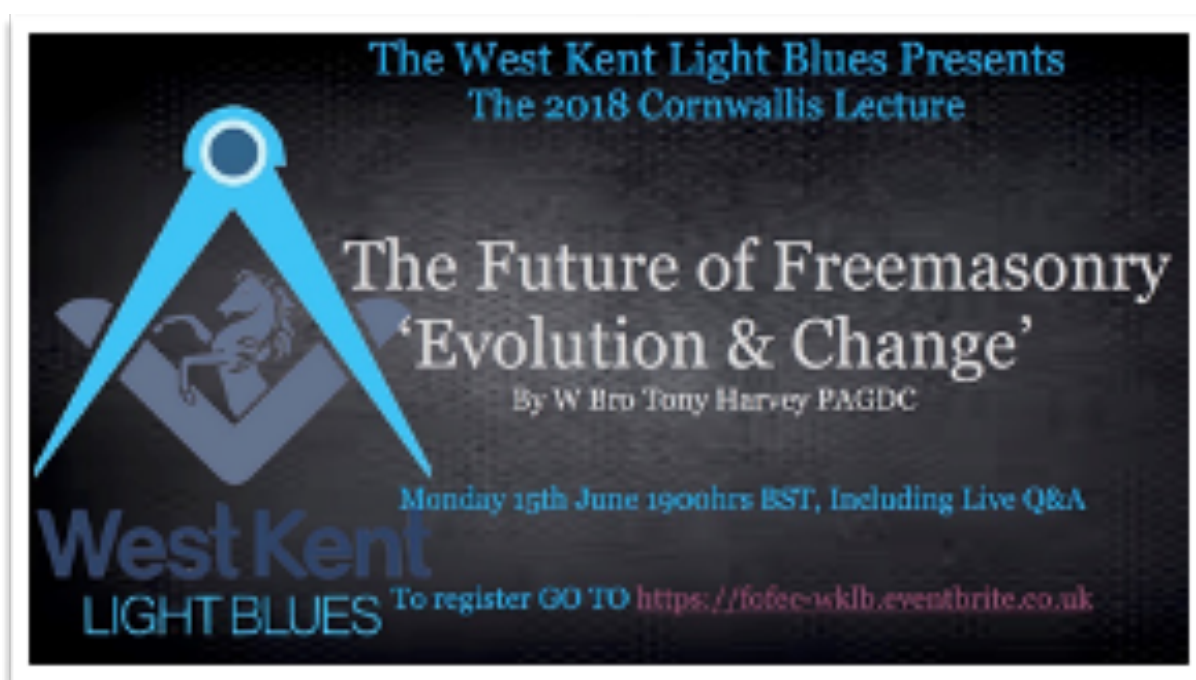
Monday the 15th of June saw the Light Blues Club host a fascinating lecture from the Province's Head of Learning and Development, Tony Harvey, The Future of Freemasonry- 'Evolution and Change'. Tony examined the nature of ch

ange and evolution in general. Moving the ritual aside, this lecture describes how freemasonry has for survived 300yrs because of its ability to evolve.

Tony is concerned that unless Lodges are managed in a way that is relevant to the 'twenty-first' century man and connect with

their local communities, they will not attract and retain members to ensure their future. The talk concludes with an approach that Lodges can take to manage their own evolution and change in a harmonious manner.

This event was well attended including our very own PGM, DPGM, our newly appointed APGM Daniel Spencer and many brethren from the Province. Guests from outside the province included The Grand Chancellor from the Grand Lodge of Georgia, Robert Kilamen from the Grand Lodge of Ontario, and the Christine Chapman the Most Worshipful Grand Master the Honourable Fraternity of Ancient Freemasons.



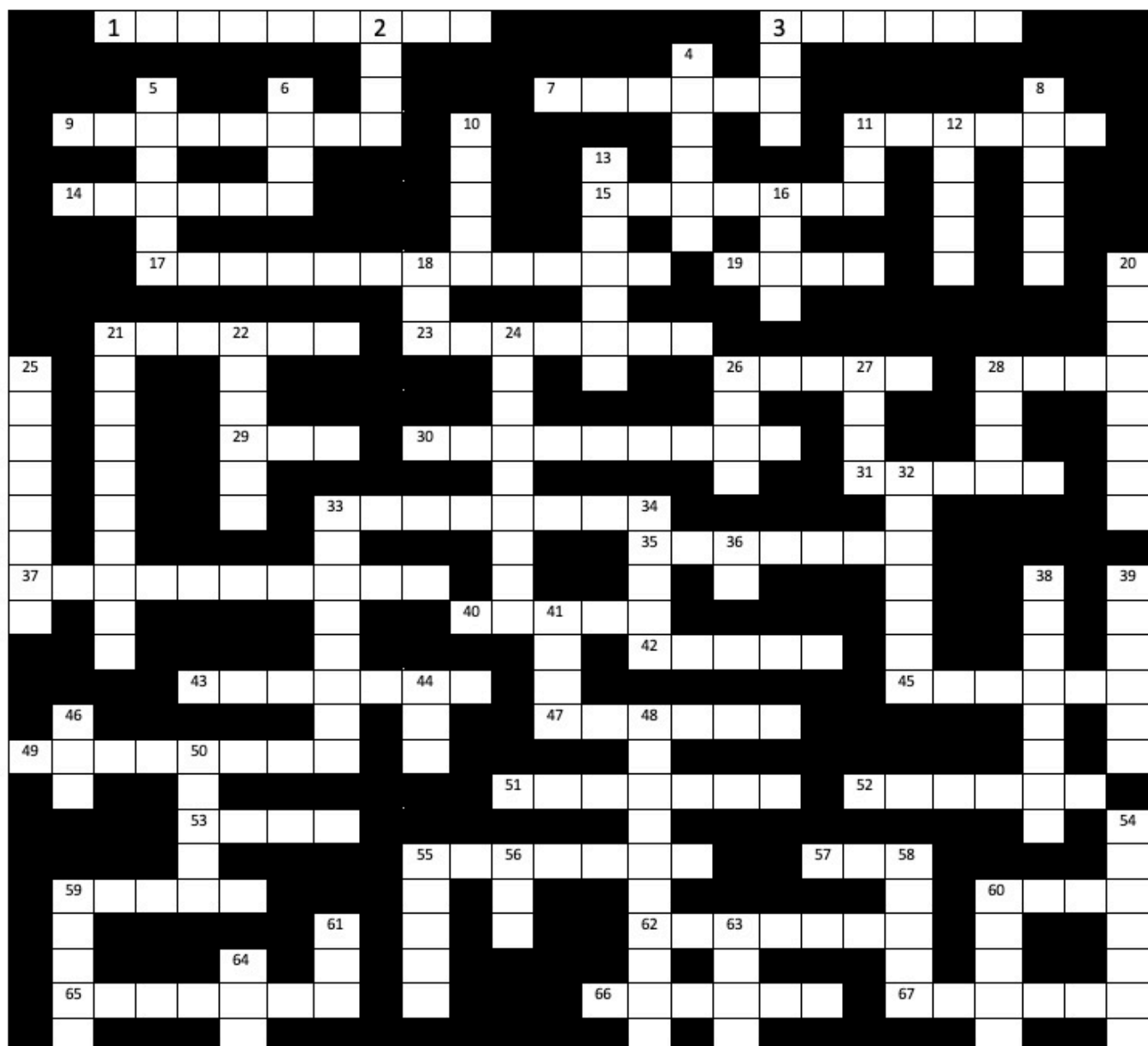


## QUIZ CORNER

### DANIEL SPENCER ASKS...



- 1.What was the name of the Tavern where the 1<sup>st</sup> Grand Lodge was formed?
- 2.In What year was the Province of Kent divided into West Kent and East Kent?
- 3.In what year did Freemasons Hall open its doors to the public for the first time and allow the building to be used as a 'film set' for hire?
- 4.How was Worshipful Brother Marion Robert Morrison better known?
- 5.Freemason, twice Prime minister and arguably the most famous soldier ever, in which year did Arthur Wellesley, Duke of Wellington die?
- 6.Name the 3 moveable jewels in a lodge?
- 7.Who was the 1<sup>st</sup> Grand Master of the premier Grand Lodge?
- 8.According to the BofC, to whom does your Lodge Warrant belong?
- 9.Name the 3 immovable jewels in a lodge?
- 10.In what year did our current Grand Master become our Grand Master?

**MASONIC CROSSWORD**, By Mark James**ACROSS**

1. Near a fall of water.
3. Statement of truth.
7. Knock, knock!
9. Now that you have passed through the "\*\*\*\*\*"
11. A monarch will gladly relinquish his sceptre for this.
14. Fergus Sings the Blues.
15. Token.



16. Originally drawn
19. Place your "\*\*\*\*\*" together.
21. We are rendered fit members for well organised society.
23. Centigrade, Fahrenheit, Celcius.
26. "\*\*\*\*\*" have we met.
28. Don't forget to wipe this off your shoulder at a consecration.
29. Resides in the South East.
30. Look to the heavens.
31. Symbolically teaches us to set a watch at the entrance of our thoughts.
33. Principal officers wear these.
35. We appear on the summons.
37. Where we keep our secrets.
40. My son shall follow me.
42. He gives the final toast.
43. Our Repast.
45. The SW has one at his pedestal.
47. Currently a very worshipful brother.
49. There are other excellences of character.
51. A heart attached to a scrip purse.
52. The skilful artist delineates with this.
53. Our deacons have two close by.
55. Our values are this.
57. Master plus one
59. With this we keep order in the lodge
60. The first care.
62. To keep us in due bounds.
65. That virtue which may justly be denominated the distinguishing characteristic.
66. As the sun rises in the East.
67. An officer wears one.

## **DOWN**

2. Such is the nature of our constitution.
3. Our jobs are these.
4. He prayed fervently.
5. We cover this with our right hand
6. Represents the SW
8. Liberal art
10. He had the greatest elevation.
12. When I sound to.
13. Acts on a centre pin.

16. The posture of my daily supplications shall remind me.
18. We come to order for his name.
20. Fraternal brothers.
21. Better known as the horn of plenty.
22. Regulates our actions.
24. With "\*\*\*\*\*" to our master we bend.
25. Elevated above an initiate's head.
26. We sing these.
27. When a brother is proven a principal officer says this.
28. On the chaplains collar.
32. Every Lodge has one.
33. Liberal art.
34. Many of these at the festive board.
36. Second regular step (abbreviation) "\*.\*."
38. Leads our prayers.
39. The lodge has two of these.
41. Usually four of these in a lodge
44. One of the three great lights.
46. Poured on a lodge board during consecration.
48. Regional business given on the second rising.
50. A group of freemasons.
54. They provide the best available for the comfort of the brethren.
55. When prepared for initiation you must not have this.
56. The JW represents this.
58. The most beautiful of the seven liberal arts.
59. Often accompanied by music.
60. The secretary has one.
61. The treasurer has one.
63. Prayer has ended.
64. Often worn on a suit jacket.

**Answers will appear in the next Edition of West Kent News.**

**Answers to Dan Spencer Asks....**

1. Goose and Gridiron
2. 1973
3. 1985
4. John Wayne

5.1852

## 6. Square, Level and Plumb-Rule

## 7. Anthony Sayer

## 8.The Grand Master (Rule 102)

## 9. Rough and Perfect Ashlars and the Tracing Board

10.1967

**SONG QUIZ** – 55 songs are depicted in the following, how many can you name?



**Answers**

- 1 Don't sit under the apple tree
- 2 Run rabbit run
- 3 Pack up your troubles in an old kit  
bag
- 4 Blue birds over the white cliffs of  
Dover
- 5 Lambeth walk
- 6 Somewhere over the rainbow
- 7 Daisy Daisy
- 8 Pop goes the weasel
- 9 Long way to Tipperary
- 10 My old man said follow the van
- 11 The sun has got its hat on
- 12 I'm forever blowing bubbles
- 13 Whispering grass
- 14 You are my sunshine
- 15 Singing in the rain
- 16 Moonlight Serenade
- 17 underneath the arches
- 18 Bye bye Blackbird
- 19 My old mans a dustman
- 20 Show me the way to go home
- 21 Knees up mother brown
- 22 Roll out the barrel
- 23 Chattanooga Choo Choo
- 24 Little brown Jug
- 25 Swinging on a star
- 26 Leaning on a lamp post
- 27 She'll be coming round the  
mountain
- 28 Down at the old bull and bush
- 29 Any old iron
- 30 Baby face
- 31 Boiled beef and carrots
- 32 Hello Dolly
- 33 When the Red Red Robin goes Bob  
Bob Bobbin Along
- 34 Tulips from Amsterdam
- 35 Boogie Woogie Bugle boy
- 36 When I'm cleaning windows
- 37 I do like to be beside the seaside
- 38 Danny Boy

